

\$1,019,800 - 4306 Whitelaw Way, Edmonton

MLS® #E4424452

\$1,019,800

5 Bedroom, 3.50 Bathroom, 2,858 sqft

Single Family on 0.00 Acres

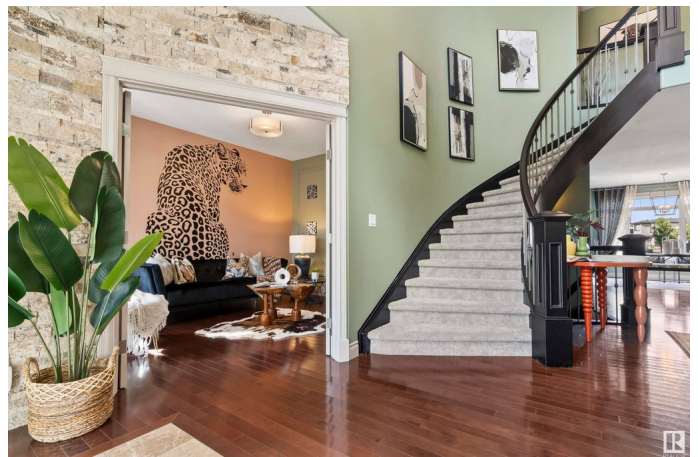
Windermere, Edmonton, AB

Welcome to Windermere, where elegance and sophistication meet in this stunning luxury residence boasting over 4,000 sq. ft. Step inside to be greeted by a grand spiral staircase elegantly framed by striking stone accent walls, setting the tone for this extraordinary home. The main floor exudes opulence, featuring a gourmet kitchen, formal dining area, breakfast nook, and a private office, all adorned with intricately designed feature walls, exquisite chandeliers, and designer light fixtures. The living area seamlessly extends to a spacious balcony, offering breathtaking views of the scenic trails and beautifully landscaped backyard. A lavish primary suite, complete with a walk-in closet, a spa-inspired ensuite with a jetted hot tub, and a heated Montecarlo bathtub-shower, anchors the upper level. Two additional bedrooms, a full washroom and a large bonus room complete this level. The brand-new, nearly 2,000 sq. ft. walkout basement is a masterpiece of its own—bright, expansive, and meticulously designed!

Built in 2011

Essential Information

MLS® #	E4424452
Price	\$1,019,800



Bedrooms	5
Bathrooms	3.50
Full Baths	3
Half Baths	1
Square Footage	2,858
Acres	0.00
Year Built	2011
Type	Single Family
Sub-Type	Detached Single Family
Style	2 Storey
Status	Active

Community Information

Address	4306 Whitelaw Way
Area	Edmonton
Subdivision	Windermere
City	Edmonton
County	ALBERTA
Province	AB
Postal Code	T6W 0P4

Amenities

Amenities	On Street Parking, Carbon Monoxide Detectors, Ceiling 9 ft., Closet Organizers, Exercise Room, Fire Pit, Front Porch, No Animal Home, No Smoking Home, Walkout Basement, 9 ft. Basement Ceiling
Parking	Double Garage Attached

Interior

Interior Features	ensuite bathroom
Appliances	Dishwasher-Built-In, Dryer, Garage Control, Garage Opener, Hood Fan, Refrigerator, Storage Shed, Window Coverings
Heating	Forced Air-2, Natural Gas
Fireplace	Yes
Fireplaces	Double Sided
Stories	3
Has Basement	Yes
Basement	Full, Finished

Exterior

Exterior	Wood, Vinyl
Exterior Features	Fenced, Fruit Trees/Shrubs, Landscaped, Low Maintenance Landscape, Playground Nearby, Schools, Shopping Nearby, See Remarks
Roof	Asphalt Shingles
Construction	Wood, Vinyl
Foundation	Concrete Perimeter

School Information

Elementary	Constable Daniel Woodall
Middle	Riverbend School
High	Lillian Osborne School

Additional Information

Date Listed	March 6th, 2025
Days on Market	55
Zoning	Zone 56
HOA Fees	160
HOA Fees Freq.	Annually

DATA IS DEEMED RELIABLE BUT IS NOT GUARANTEED ACCURATE BY THE REALTORS® ASSOCIATION OF EDMONTON. COPYRIGHT 2025 BY THE REALTORS® ASSOCIATION OF EDMONTON. ALL RIGHTS RESERVED. Trademarks are owned or controlled by the Canadian Real Estate Association (CREA) and identify real estate professionals who are members of CREA (REALTOR®, REALTORS®) and/or the quality of services they provide (MLS®, Multiple Listing Service®)

Listing information last updated on April 30th, 2025 at 5:02am MDT