

\$175,500 - 329 10404 24 Avenue, Edmonton

MLS® #E4428217

\$175,500

2 Bedroom, 1.00 Bathroom, 1,056 sqft

Condo / Townhouse on 0.00 Acres

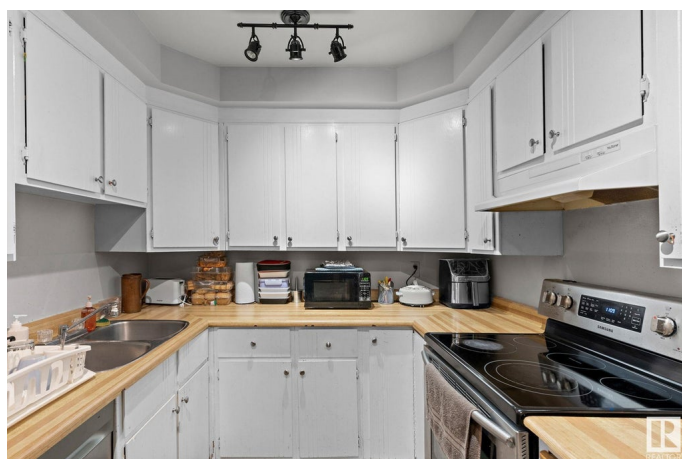
Ermineskin, Edmonton, AB

Welcome to this well-maintained 2-bedroom condo, close proximity to Century Park LRT, cinema, IKEA & South Common. Enjoy easy access from your assigned parking stall to a private entryway that leads into a spacious living room with a clear view of your exclusive-use patio. This two-storey unit offers a smart layout with bedrooms upstairs and a stylish main floor featuring luxury vinyl plank flooring. The kitchen includes white cabinetry, a double-door Samsung fridge, upgraded stove, and a layout that makes cooking enjoyable. Adjacent to the dining area is a rare in-suite storage space, along with in-suite laundry for added convenience. The bedrooms are generously sized, with the primary easily fitting a king bed and offering cheater en-suite to the full bath. Located in a well-run, pet-friendly condo with affordable fees, this home combines comfort, function, and value. A great opportunity to step into home ownership.

Built in 1978

Essential Information

MLS® #	E4428217
Price	\$175,500
Bedrooms	2
Bathrooms	1.00



Full Baths	1
Square Footage	1,056
Acres	0.00
Year Built	1978
Type	Condo / Townhouse
Sub-Type	Stacked Townhouse
Style	2 Storey
Status	Active

Community Information

Address	329 10404 24 Avenue
Area	Edmonton
Subdivision	Ermineskin
City	Edmonton
County	ALBERTA
Province	AB
Postal Code	T6J 4J7

Amenities

Amenities	See Remarks
Parking	Stall

Interior

Interior Features	ensuite bathroom
Appliances	Dishwasher-Built-In, Dryer, Fan-Ceiling, Microwave Hood Fan, Refrigerator, Stacked Washer/Dryer, Stove-Electric, Washer
Heating	Forced Air-1, Natural Gas
Stories	2
Has Basement	Yes
Basement	None, No Basement

Exterior

Exterior	Wood, Vinyl
Exterior Features	Landscaped, Public Transportation, Schools, Shopping Nearby, See Remarks
Roof	Asphalt Shingles
Construction	Wood, Vinyl
Foundation	Concrete Perimeter

Additional Information

Date Listed	March 30th, 2025
Days on Market	31
Zoning	Zone 16
Condo Fee	\$246

DATA IS DEEMED RELIABLE BUT IS NOT GUARANTEED ACCURATE BY THE REALTORS® ASSOCIATION OF EDMONTON. COPYRIGHT 2025 BY THE REALTORS® ASSOCIATION OF EDMONTON. ALL RIGHTS RESERVED. Trademarks are owned or controlled by the Canadian Real Estate Association (CREA) and identify real estate professionals who are members of CREA (REALTOR®, REALTORS®) and/or the quality of services they provide (MLS®, Multiple Listing Service®)

Listing information last updated on April 30th, 2025 at 6:17pm MDT