

\$272,000 - 1552 Mill Woods, Edmonton

MLS® #E4429629

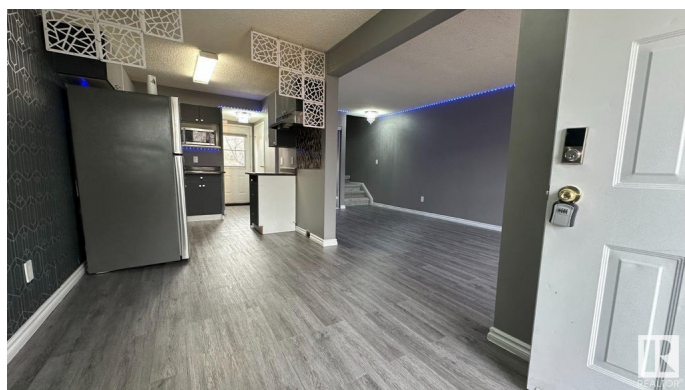
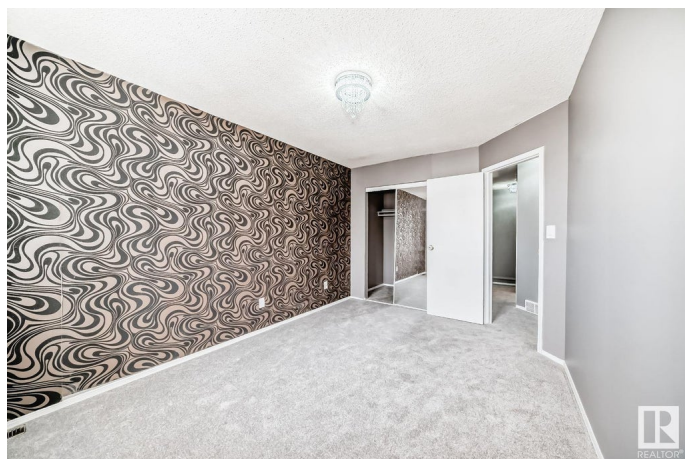
\$272,000

4 Bedroom, 1.50 Bathroom, 1,075 sqft

Condo / Townhouse on 0.00 Acres

Pollard Meadows, Edmonton, AB

Visit the Listing Brokerage (and/or listing REALTOR®) website to obtain additional information. This beautifully updated townhouse is located in a vibrant, well-connected community, with LRT stations, multiple schools, and shopping all within walking distance. As a corner unit, it offers two dedicated parking spaces—most others have only one. The front and backyard are nearly three times the size of those of non-corner units, providing extra space for relaxation, gardening, or entertaining. Inside, the home features a partially finished basement with an additional room that includes a window and generous storage space. Recent renovations include fresh paint, new carpeting, upgraded electrical switches, a stylish chandelier, and modern lighting, creating a bright and inviting atmosphere. The shingles have also been recently replaced, adding to the home's long-term value. Most recent upgrades is vinyl flooring throughout the kitchen and living room.



Built in 1992

Essential Information

MLS® # E4429629

Price \$272,000

Bedrooms 4

| | |
|----------------|-------------------|
| Bathrooms | 1.50 |
| Full Baths | 1 |
| Half Baths | 1 |
| Square Footage | 1,075 |
| Acres | 0.00 |
| Year Built | 1992 |
| Type | Condo / Townhouse |
| Sub-Type | Townhouse |
| Style | 2 Storey |
| Status | Active |

Community Information

| | |
|-------------|-----------------|
| Address | 1552 Mill Woods |
| Area | Edmonton |
| Subdivision | Pollard Meadows |
| City | Edmonton |
| County | ALBERTA |
| Province | AB |
| Postal Code | T6L 6V5 |

Amenities

| | |
|----------------|-------------|
| Amenities | See Remarks |
| Parking Spaces | 2 |
| Parking | Stall |

Interior

| | |
|--------------|-----------------------------|
| Appliances | See Remarks |
| Heating | Forced Air-1, Natural Gas |
| Stories | 2 |
| Has Basement | Yes |
| Basement | Partial, Partially Finished |

Exterior

| | |
|-------------------|---|
| Exterior | Wood, Vinyl |
| Exterior Features | Corner Lot, Fenced, No Through Road, Public Transportation, Schools, Shopping Nearby, See Remarks |
| Roof | Asphalt Shingles |
| Construction | Wood, Vinyl |
| Foundation | Concrete Perimeter |

Additional Information

| | |
|----------------|-----------------|
| Date Listed | April 5th, 2025 |
| Days on Market | 72 |
| Zoning | Zone 29 |
| Condo Fee | \$200 |

DATA IS DEEMED RELIABLE BUT IS NOT GUARANTEED ACCURATE BY THE REALTORS® ASSOCIATION OF EDMONTON. COPYRIGHT 2025 BY THE REALTORS® ASSOCIATION OF EDMONTON. ALL RIGHTS RESERVED.Trademarks are owned or controlled by the Canadian Real Estate Association (CREA) and identify real estate professionals who are members of CREA (REALTOR®, REALTORS®) and/or the quality of services they provide (MLS®, Multiple Listing Service®)

Listing information last updated on June 16th, 2025 at 8:32am MDT