

\$366,000 - 28 655 Tamarack Road, Edmonton

MLS® #E4429697

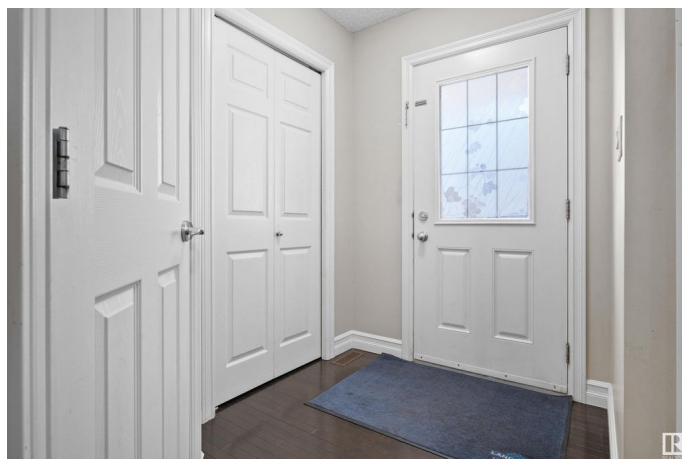
\$366,000

3 Bedroom, 3.00 Bathroom, 1,236 sqft

Condo / Townhouse on 0.00 Acres

Tamarack, Edmonton, AB

Welcome to this fantastic half duplex nestled in the highly sought-after community of Tamarack. Backing onto a TRAIL, there are no backing neighbours. This beautifully maintained home features a FINISHED BASEMENT with a BATHROOM, offering plenty of space for families of all sizes. The main floor welcomes you with a spacious front entry, leading into an open-concept kitchen with granite countertops and ample cabinet space. Right next to the kitchen is a dining area filled with lots of natural light. This flows seamlessly in a cozy living room, perfect for relaxing after a long day or hosting guests. Upstairs, you'll find three generously sized bedrooms, including a primary bedroom with a full ensuite. A second full bathroom serves the additional bedrooms, offering both comfort and functionality. This home is fully landscaped with a fence and a deck. Situated in a prime location, you're just steps from public transit, shopping, and Schools.



Built in 2013

Essential Information

MLS® #	E4429697
Price	\$366,000
Bedrooms	3
Bathrooms	3.00

Full Baths	2
Half Baths	2
Square Footage	1,236
Acres	0.00
Year Built	2013
Type	Condo / Townhouse
Sub-Type	Half Duplex
Style	2 Storey
Status	Active

Community Information

Address	28 655 Tamarack Road
Area	Edmonton
Subdivision	Tamarack
City	Edmonton
County	ALBERTA
Province	AB
Postal Code	T6T 0N4

Amenities

Amenities	Deck, See Remarks
Parking	Single Garage Attached

Interior

Interior Features	ensuite bathroom
Appliances	Dishwasher-Built-In, Dryer, Garage Control, Garage Opener, Microwave Hood Fan, Refrigerator, Stove-Electric, Washer
Heating	Forced Air-1, Natural Gas
Stories	3
Has Basement	Yes
Basement	Full, Finished

Exterior

Exterior	Wood, Vinyl
Exterior Features	Fenced, Landscaped, Playground Nearby, Public Transportation, Schools, Shopping Nearby
Roof	Asphalt Shingles
Construction	Wood, Vinyl
Foundation	Concrete Perimeter

Additional Information

Date Listed	April 8th, 2025
Days on Market	22
Zoning	Zone 30
Condo Fee	\$273

DATA IS DEEMED RELIABLE BUT IS NOT GUARANTEED ACCURATE BY THE REALTORS® ASSOCIATION OF EDMONTON. COPYRIGHT 2025 BY THE REALTORS® ASSOCIATION OF EDMONTON. ALL RIGHTS RESERVED.Trademarks are owned or controlled by the Canadian Real Estate Association (CREA) and identify real estate professionals who are members of CREA (REALTOR®, REALTORS®) and/or the quality of services they provide (MLS®, Multiple Listing Service®)

Listing information last updated on April 30th, 2025 at 7:02pm MDT