

\$682,000 - 54101 Rge Rd 275, Rural Parkland County

MLS® #E4431387

\$682,000

0 Bedroom, 0.00 Bathroom,
Rural on 55.10 Acres

None, Rural Parkland County, AB

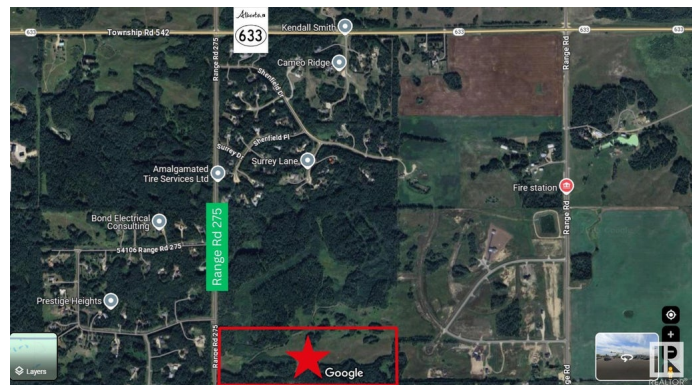
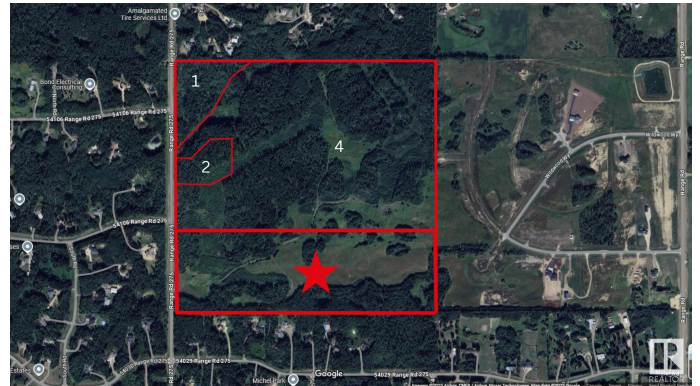
Large and Versatile--55.10+/- acres zoned RC - Country Residential District, with wide-open potential. This expansive out of subdivision parcel at the south end of City View Estates offers open views, tree lines for privacy, and flexible options for use. Create your dream estate, develop a hobby farm, or invest in land with long-term potential. The gently rolling terrain provides natural drainage and stunning building sites, with easy access and paved roads only 30 minutes from west Edmonton, 20 minutes from St. Albert and Acheson and just 10 minutes from Spruce Grove. Power and gas at the property line.

Essential Information

MLS® #	E4431387
Price	\$682,000
Bathrooms	0.00
Acres	55.10
Type	Rural
Sub-Type	Vacant Lot/Land
Status	Active

Community Information

Address	54101 Rge Rd 275
Area	Rural Parkland County
Subdivision	None



City	Rural Parkland County
County	ALBERTA
Province	AB
Postal Code	T7X 3S4

Exterior

Exterior Features See Remarks

Additional Information

Date Listed	April 17th, 2025
Days on Market	13
Zoning	Zone 90

DATA IS DEEMED RELIABLE BUT IS NOT GUARANTEED ACCURATE BY THE REALTORS® ASSOCIATION OF EDMONTON. COPYRIGHT 2025 BY THE REALTORS® ASSOCIATION OF EDMONTON. ALL RIGHTS RESERVED. Trademarks are owned or controlled by the Canadian Real Estate Association (CREA) and identify real estate professionals who are members of CREA (REALTOR®, REALTORS®) and/or the quality of services they provide (MLS®, Multiple Listing Service®)

Listing information last updated on April 30th, 2025 at 11:17am MDT