

\$785,000 - 9015 140 Street, Edmonton

MLS® #E4431832

\$785,000

5 Bedroom, 3.50 Bathroom, 2,403 sqft

Single Family on 0.00 Acres

Parkview, Edmonton, AB

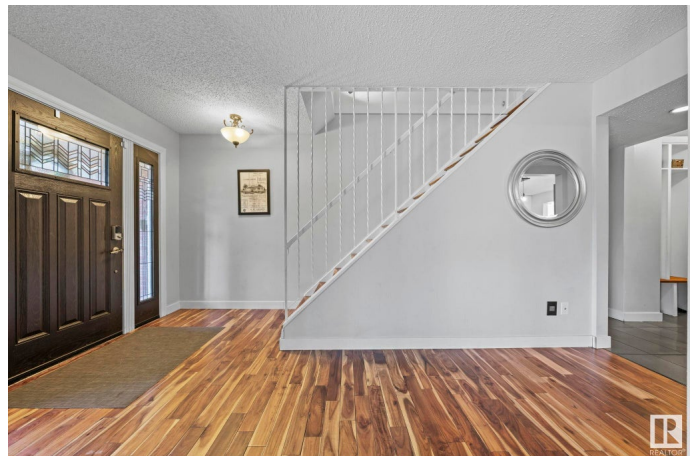
The One Youâ€™ve Been Waiting for in Valleyview! This fantastic 2,400 sq. ft. home features 4+1 bedrooms, 3.5 baths, and an open layout on a desirable corner lot in sought-after Parkview. Step onto rich acacia hardwood flooring and into a spacious living room that opens to a 4-season sunroom and elegant dining area with built-ins. The remodeled kitchen is complete with quartz countertops and high-end stainless steel appliances. A versatile flex spaceâ€”perfect as a playroom, office, and/or mudroomâ€”offers access to both side yards. Upstairs, youâ€™ll find four generous bedrooms, including a large primary suite with a 3-pc ensuite, a 4-pc bathroom, and a bonus room. The fully finished basement offers vinyl plank flooring, a huge rec room, bright 5th bedroom with a 3-pc ensuite, and a spacious laundry area. Enjoy the oversized double garage, massive brick patio, brand new furnace, abundant storage, and great curb appeal. Donâ€™t miss this fantastic opportunity in a prime Parkview location!

Built in 1962

Essential Information

MLS® # E4431832

Price \$785,000



Bedrooms	5
Bathrooms	3.50
Full Baths	3
Half Baths	1
Square Footage	2,403
Acres	0.00
Year Built	1962
Type	Single Family
Sub-Type	Detached Single Family
Style	2 Storey
Status	Active

Community Information

Address	9015 140 Street
Area	Edmonton
Subdivision	Parkview
City	Edmonton
County	ALBERTA
Province	AB
Postal Code	T5R 0J7

Amenities

Amenities	Patio, Sunroom
Parking Spaces	4
Parking	Double Garage Attached

Interior

Interior Features	ensuite bathroom
Appliances	Dishwasher-Built-In, Dryer, Refrigerator, Stove-Gas, Washer, Window Coverings
Heating	Forced Air-1, Natural Gas
Fireplace	Yes
Fireplaces	Mantel
Stories	3
Has Basement	Yes
Basement	Full, Finished

Exterior

Exterior	Wood, Brick, Vinyl
----------	--------------------

Exterior Features	Corner Lot, Fenced, Landscaped, Low Maintenance Landscape, Playground Nearby, Public Transportation, Schools, Shopping Nearby
Roof	Asphalt Shingles
Construction	Wood, Brick, Vinyl
Foundation	Concrete Perimeter

School Information

Elementary	Parkview/ St.Paul
Middle	Parkview/ St.Rose
High	RossShepherd/ St.FX

Additional Information

Date Listed	April 19th, 2025
Days on Market	11
Zoning	Zone 10

DATA IS DEEMED RELIABLE BUT IS NOT GUARANTEED ACCURATE BY THE REALTORS® ASSOCIATION OF EDMONTON. COPYRIGHT 2025 BY THE REALTORS® ASSOCIATION OF EDMONTON. ALL RIGHTS RESERVED.Trademarks are owned or controlled by the Canadian Real Estate Association (CREA) and identify real estate professionals who are members of CREA (REALTOR®, REALTORS®) and/or the quality of services they provide (MLS®, Multiple Listing Service®)

Listing information last updated on April 30th, 2025 at 5:02am MDT