

\$299,900 - 308 1003 Gault Boulevard, Edmonton

MLS® #E4433465

\$299,900

2 Bedroom, 2.00 Bathroom, 910 sqft

Condo / Townhouse on 0.00 Acres

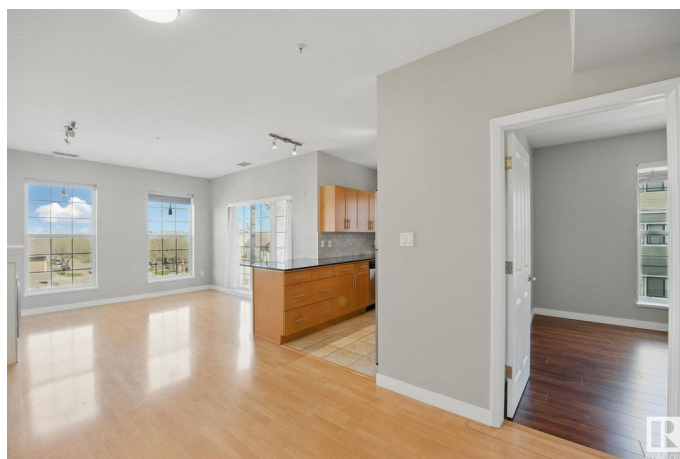
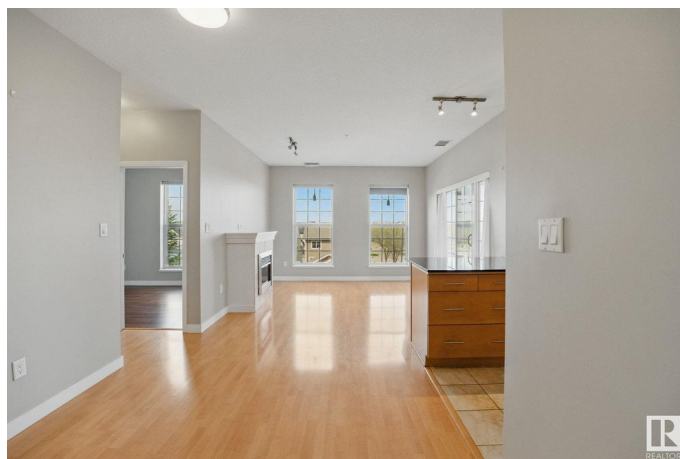
Griesbach, Edmonton, AB

Welcome to Victory Point in Griesbach, one of Edmonton's most prestigious communities. This 2-bedroom, 2-bathroom condo offers over 900 sq ft of open living in a quiet, well-maintained building. The bright living room features large windows, while the kitchen is equipped with stainless steel appliances, granite countertops, and plenty of workspace. Enjoy fresh air or entertain on the spacious balcony. Bedrooms are located on opposite sides for added privacy, with a walk-through closet and private ensuite in the primary. In-suite laundry provides extra storage, and one of the two underground parking stalls includes a private, locked storage unit. With low condo fees that include heat and water, plus access to a fitness and social room, this unit offers comfort, convenience and just steps from lakes, trails, and shopping.

Built in 2007

Essential Information

MLS® #	E4433465
Price	\$299,900
Bedrooms	2
Bathrooms	2.00
Full Baths	2
Square Footage	910
Acres	0.00



Year Built	2007
Type	Condo / Townhouse
Sub-Type	Lowrise Apartment
Style	Single Level Apartment
Status	Active

Community Information

Address	308 1003 Gault Boulevard
Area	Edmonton
Subdivision	Griesbach
City	Edmonton
County	ALBERTA
Province	AB
Postal Code	T5H 4E5

Amenities

Amenities	On Street Parking, Ceiling 9 ft., Exercise Room, No Animal Home, No Smoking Home, Parking-Extra, Parking-Visitor, Party Room, Patio, Social Rooms, Storage Cage
Parking Spaces	2
Parking	Heated, Parkade, Underground

Interior

Interior Features	ensuite bathroom
Appliances	Dishwasher-Built-In, Microwave Hood Fan, Refrigerator, Stacked Washer/Dryer, Stove-Electric
Heating	Heat Pump, Natural Gas
Fireplace	Yes
Fireplaces	Tile Surround
# of Stories	4
Stories	1
Has Basement	Yes
Basement	None, No Basement

Exterior

Exterior	Wood, Brick, Stucco
Exterior Features	See Remarks
Roof	Asphalt Shingles
Construction	Wood, Brick, Stucco

Foundation Concrete Perimeter

Additional Information

Date Listed April 30th, 2025
Days on Market 5
Zoning Zone 27
Condo Fee \$550

DATA IS DEEMED RELIABLE BUT IS NOT GUARANTEED ACCURATE BY THE REALTORS® ASSOCIATION OF EDMONTON. COPYRIGHT 2025 BY THE REALTORS® ASSOCIATION OF EDMONTON. ALL RIGHTS RESERVED.Trademarks are owned or controlled by the Canadian Real Estate Association (CREA) and identify real estate professionals who are members of CREA (REALTOR®, REALTORS®) and/or the quality of services they provide (MLS®, Multiple Listing Service®)
Listing information last updated on May 5th, 2025 at 12:02am MDT