

\$599,900 - 2040 210 St, Edmonton

MLS® #E4433986

\$599,900

5 Bedroom, 4.00 Bathroom, 1,906 sqft

Single Family on 0.00 Acres

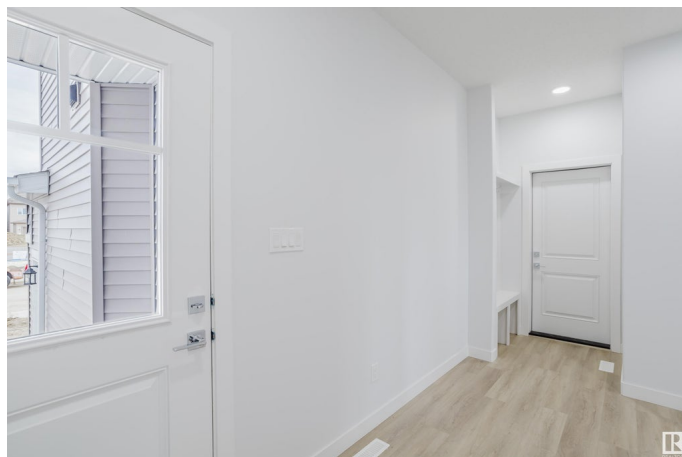
Stillwater, Edmonton, AB

BRAND NEW HOME IN VERGE, STILLWATER! LEGAL 2 BEDROOM BASEMENT SUITE with Private Side Entrance! This home features 9ft Ceilings & an Open concept floor plan. The stylized Living / Dining Area has an Ultra Modern Fireplace and In-Style Vinyl Plank Flooring. The modern two tone kitchen comes complete with ample storage and a large island with a white quartz countertop! Upstairs you'll find 3 LARGE bedrooms including a luxurious primary bedroom with a walk-in closet and ensuite, spacious laundry with a sink and a versatile bonus room. The 2 Bedroom Basement Suite features its own laundry and a full sized kitchen.

Built in 2025

Essential Information

| | |
|----------------|---------------|
| MLS® # | E4433986 |
| Price | \$599,900 |
| Bedrooms | 5 |
| Bathrooms | 4.00 |
| Full Baths | 4 |
| Square Footage | 1,906 |
| Acres | 0.00 |
| Year Built | 2025 |
| Type | Single Family |



| | |
|----------|------------------------|
| Sub-Type | Detached Single Family |
| Style | 2 Storey |
| Status | Active |

Community Information

| | |
|-------------|-------------|
| Address | 2040 210 St |
| Area | Edmonton |
| Subdivision | Stillwater |
| City | Edmonton |
| County | ALBERTA |
| Province | AB |
| Postal Code | T6M 3H6 |

Amenities

| | |
|-----------|---|
| Amenities | Ceiling 9 ft., Detectors Smoke, Exterior Walls- 2"x6", Hot Water Tankless, No Animal Home, No Smoking Home, Vinyl Windows, Natural Gas Stove Hookup |
| Parking | Double Garage Attached |

Interior

| | |
|-------------------|---|
| Interior Features | ensuite bathroom |
| Appliances | Garage Control, Garage Opener, Hood Fan |
| Heating | Forced Air-2, Natural Gas |
| Fireplace | Yes |
| Fireplaces | Remote Control |
| Stories | 3 |
| Has Suite | Yes |
| Has Basement | Yes |
| Basement | Full, Finished |

Exterior

| | |
|-------------------|--|
| Exterior | Wood, Stone, Vinyl |
| Exterior Features | Playground Nearby, Public Transportation, Schools, Shopping Nearby |
| Roof | Asphalt Shingles |
| Construction | Wood, Stone, Vinyl |
| Foundation | Concrete Perimeter |

Additional Information

| | |
|-------------|---------------|
| Date Listed | May 1st, 2025 |
|-------------|---------------|

Days on Market 7

Zoning Zone 57

DATA IS DEEMED RELIABLE BUT IS NOT GUARANTEED ACCURATE BY THE REALTORS® ASSOCIATION OF EDMONTON. COPYRIGHT 2025 BY THE REALTORS® ASSOCIATION OF EDMONTON. ALL RIGHTS RESERVED. Trademarks are owned or controlled by the Canadian Real Estate Association (CREA) and identify real estate professionals who are members of CREA (REALTOR®, REALTORS®) and/or the quality of services they provide (MLS®, Multiple Listing Service®)

Listing information last updated on May 8th, 2025 at 3:47pm MDT