

\$535,000 - 6443 164 Avenue, Edmonton

MLS® #E4434024

\$535,000

4 Bedroom, 3.50 Bathroom, 1,927 sqft

Single Family on 0.00 Acres

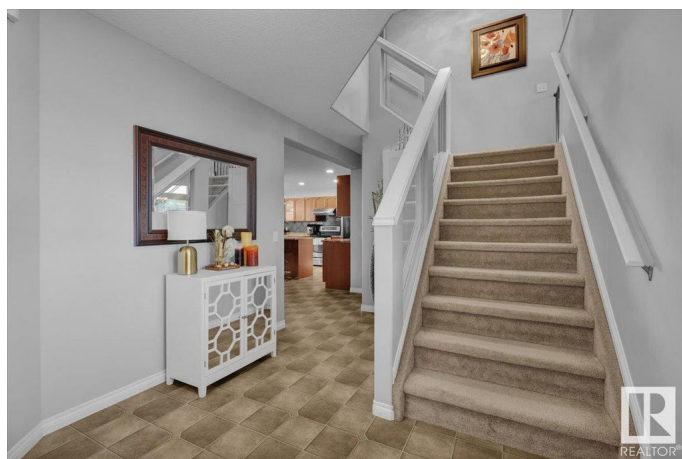
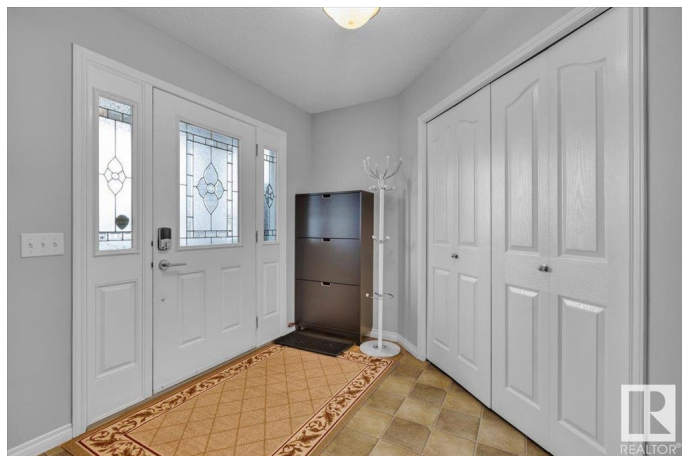
Matt Berry, Edmonton, AB

Located on a large pie shaped lot in a cul-de-sac. Terrific family home with family sized kitchen open to a great room with gas fireplace. 3 bedrooms plus bonus room upstairs. Spacious primary bedroom with walk in closet and a large ensuite with jetted tub and shower. Recently renovated basement features a large 4th bedroom, full bath and family room. Additional features include main floor laundry, hardwood floors, stainless steel appliances, large deck and more! For more details please visit the REALTOR®'s Website.

Built in 2006

Essential Information

MLS® #	E4434024
Price	\$535,000
Bedrooms	4
Bathrooms	3.50
Full Baths	3
Half Baths	1
Square Footage	1,927
Acres	0.00
Year Built	2006
Type	Single Family
Sub-Type	Detached Single Family
Style	2 Storey



Status Active

Community Information

Address 6443 164 Avenue
Area Edmonton
Subdivision Matt Berry
City Edmonton
County ALBERTA
Province AB
Postal Code T5Y 3J2

Amenities

Amenities Deck, Sauna; Swirlpool; Steam, Vaulted Ceiling, Vinyl Windows
Parking Spaces 4
Parking Double Garage Attached

Interior

Interior Features ensuite bathroom
Appliances Dishwasher-Built-In, Dryer, Garage Control, Garage Opener, Refrigerator, Stove-Electric, Washer, Window Coverings
Heating Forced Air-1, Natural Gas
Fireplace Yes
Fireplaces Mantel
Stories 3
Has Basement Yes
Basement Full, Finished

Exterior

Exterior Wood, Brick, Vinyl
Exterior Features Cul-De-Sac, Playground Nearby, Public Transportation, Schools, Shopping Nearby
Roof Asphalt Shingles
Construction Wood, Brick, Vinyl
Foundation Concrete Perimeter

School Information

Elementary Dr. Donald M/St. John B
Middle Dr. Donald M/J.J. Bowlen
High M.E. Lazerte/Archbishop O'

Additional Information

Date Listed May 2nd, 2025
Days on Market 8
Zoning Zone 03

DATA IS DEEMED RELIABLE BUT IS NOT GUARANTEED ACCURATE BY THE REALTORS® ASSOCIATION OF EDMONTON. COPYRIGHT 2025 BY THE REALTORS® ASSOCIATION OF EDMONTON. ALL RIGHTS RESERVED.Trademarks are owned or controlled by the Canadian Real Estate Association (CREA) and identify real estate professionals who are members of CREA (REALTOR®, REALTORS®) and/or the quality of services they provide (MLS®, Multiple Listing Service®)
Listing information last updated on May 10th, 2025 at 8:02am MDT