

Courtesy Of Dustin Racine Of Exp Realty

\$549,900 - 1996 Glenmore Avenue, Sherwood Park

MLS® #E4434133

\$549,900

4 Bedroom, 3.00 Bathroom, 1,270 sqft
Single Family on 0.00 Acres

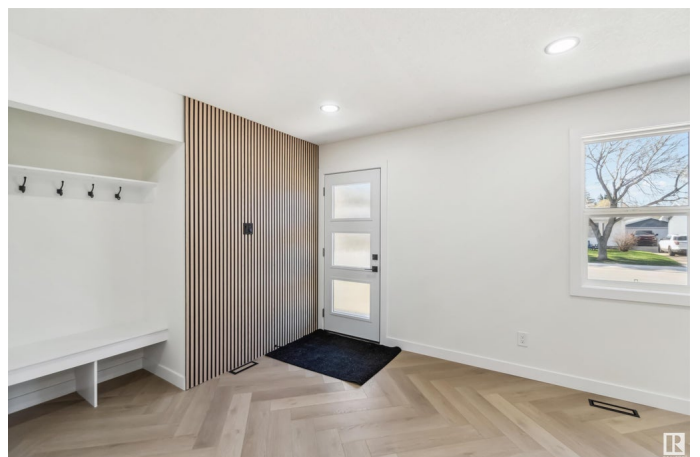
Broadmoor, Sherwood Park, AB

This stunning property has been **COMPLETELY RENOVATED** from top to bottom! The bright and open main floor features a built-in front entry bench and feature wall. The living room has an electric fireplace w/ floor to floor-to-ceiling tile and floating shelves. The enormous kitchen contains a huge island, quartz countertops, dual colored cabinets, and stainless steel appliances. The main level has 3 bedrooms, including an enormous primary bedroom with full 3 pc. bath. The quality and detail continue with Herringbone patterned vinyl plank throughout the main level. Downstairs is a family room, den/office, 4th bedroom and a sizeable laundry/mechanical room with a brand new furnace and tankless HWT. The exterior stuns with Newer shingles, vinyl windows, siding and a fully fenced and landscaped yard with fresh sod. This home has been completely overhauled with too many upgrades to list. Located in the heart of Sherwood Park, close to the leisure center, walking trails, green space, parks, and lakes!

Built in 1967

Essential Information

MLS® #	E4434133
Price	\$549,900



Bedrooms	4
Bathrooms	3.00
Full Baths	3
Square Footage	1,270
Acres	0.00
Year Built	1967
Type	Single Family
Sub-Type	Detached Single Family
Style	Bungalow
Status	Active

Community Information

Address	1996 Glenmore Avenue
Area	Sherwood Park
Subdivision	Broadmoor
City	Sherwood Park
County	ALBERTA
Province	AB
Postal Code	T8A 0X8

Amenities

Amenities	Hot Water Tankless, Vinyl Windows
Parking	Single Garage Attached

Interior

Interior Features	ensuite bathroom
Appliances	Dishwasher-Built-In, Dryer, Refrigerator, Stove-Electric, Washer
Heating	Forced Air-1, Natural Gas
Stories	2
Has Basement	Yes
Basement	Full, Finished

Exterior

Exterior	Wood, Vinyl
Exterior Features	Fenced, Golf Nearby, Landscaped, Playground Nearby, Public Swimming Pool, Public Transportation, Shopping Nearby
Roof	Asphalt Shingles
Construction	Wood, Vinyl
Foundation	Concrete Perimeter

Additional Information

Date Listed May 2nd, 2025
Days on Market 10
Zoning Zone 25

DATA IS DEEMED RELIABLE BUT IS NOT GUARANTEED ACCURATE BY THE REALTORS® ASSOCIATION OF EDMONTON. COPYRIGHT 2025 BY THE REALTORS® ASSOCIATION OF EDMONTON. ALL RIGHTS RESERVED.Trademarks are owned or controlled by the Canadian Real Estate Association (CREA) and identify real estate professionals who are members of CREA (REALTOR®, REALTORS®) and/or the quality of services they provide (MLS®, Multiple Listing Service®)
Listing information last updated on May 12th, 2025 at 1:17am MDT