

\$249,999 - 12917 66 Street, Edmonton

MLS® #E4435969

\$249,999

3 Bedroom, 1.00 Bathroom, 1,442 sqft
Single Family on 0.00 Acres

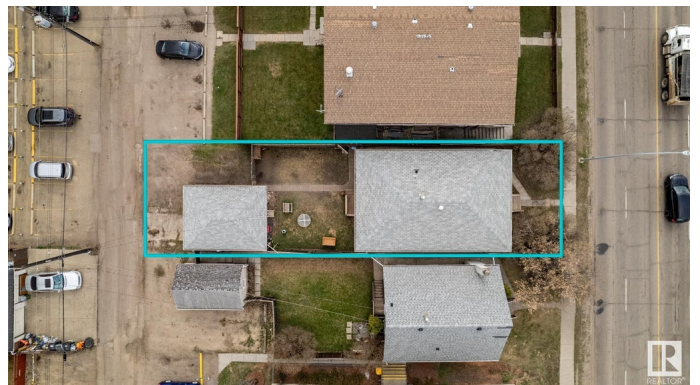
Belvedere, Edmonton, AB

INVESTOR ALERT! This is your chance to secure a prime redevelopment opportunity in a growing area with RA8 zoning (Apartment Zoning) – ideal for future multi-family development. Situated on a 33 ft x 132 ft lot, this property is being sold at land value, making it a perfect buy-and-hold opportunity. Currently occupied by long-term tenants, you can earn income while planning your next build. An oversized single garage adds additional value and utility. Located steps from public transportation, close to schools, and minutes from Londonderry Mall, Clareview, and the Commonwealth Rec Centre. This property offers convenience, strong future potential, and a strategic location for your next investment. Don't miss out!

Built in 1957

Essential Information

MLS® #	E4435969
Price	\$249,999
Bedrooms	3
Bathrooms	1.00
Full Baths	1
Square Footage	1,442
Acres	0.00
Year Built	1957



Type	Single Family
Sub-Type	Detached Single Family
Style	Bungalow
Status	Active

Community Information

Address	12917 66 Street
Area	Edmonton
Subdivision	Belvedere
City	Edmonton
County	ALBERTA
Province	AB
Postal Code	T5C 0A6

Amenities

Amenities	See Remarks
Parking	Over Sized

Interior

Appliances	Refrigerator, Stove-Electric
Heating	Forced Air-1, Natural Gas
Stories	1
Has Basement	Yes
Basement	Full, Unfinished

Exterior

Exterior	Wood, Stucco, Vinyl
Exterior Features	Back Lane, Fenced, Low Maintenance Landscape, Playground Nearby, Public Transportation, Schools, Shopping Nearby
Roof	Asphalt Shingles
Construction	Wood, Stucco, Vinyl
Foundation	Concrete Perimeter

School Information

Elementary	Belvedere School
Middle	Balwin School
High	M.E. LaZerte School

Additional Information

Date Listed	May 12th, 2025
-------------	----------------

Days on Market 35

Zoning Zone 02

DATA IS DEEMED RELIABLE BUT IS NOT GUARANTEED ACCURATE BY THE REALTORS® ASSOCIATION OF EDMONTON. COPYRIGHT 2025 BY THE REALTORS® ASSOCIATION OF EDMONTON. ALL RIGHTS RESERVED. Trademarks are owned or controlled by the Canadian Real Estate Association (CREA) and identify real estate professionals who are members of CREA (REALTOR®, REALTORS®) and/or the quality of services they provide (MLS®, Multiple Listing Service®)

Listing information last updated on June 16th, 2025 at 11:02am MDT