

\$519,000 - 3830 112 Avenue, Edmonton

MLS® #E4437553

\$519,000

2 Bedroom, 2.00 Bathroom, 1,311 sqft
Single Family on 0.00 Acres

Beverly Heights, Edmonton, AB

Excellent investment opportunity in Beverley Hts! Original home on a double sized lot (approx 100' x 119') along a quiet tree lined avenue. Blocks away from Ada Boulevard and the river valley.

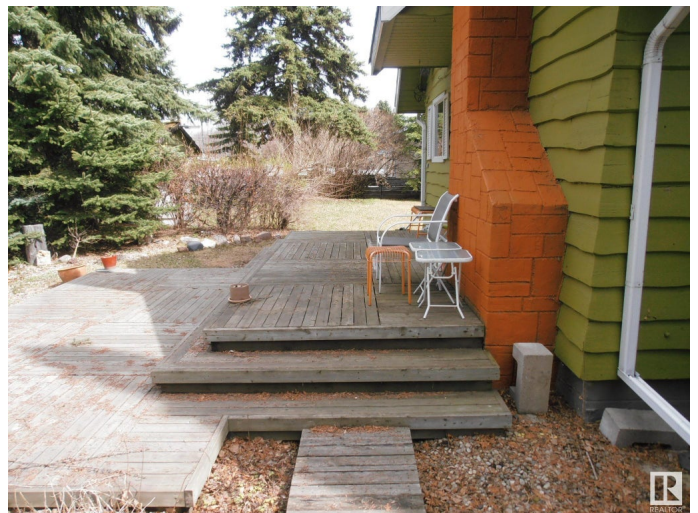
Built in 1943

Essential Information

MLS® #	E4437553
Price	\$519,000
Bedrooms	2
Bathrooms	2.00
Full Baths	2
Square Footage	1,311
Acres	0.00
Year Built	1943
Type	Single Family
Sub-Type	Detached Single Family
Style	1 and Half Storey
Status	Active

Community Information

Address	3830 112 Avenue
Area	Edmonton
Subdivision	Beverly Heights
City	Edmonton
County	ALBERTA



Province	AB
Postal Code	T5W 0M6

Amenities

Amenities	See Remarks
Parking	Double Garage Detached, Parking Pad Cement/Paved

Interior

Appliances	Garage Control, Garage Opener
Heating	Forced Air-1, Natural Gas
Stories	2
Has Basement	Yes
Basement	Full, Partially Finished

Exterior

Exterior	Wood
Exterior Features	Back Lane, Flat Site, See Remarks
Roof	Asphalt Shingles
Construction	Wood
Foundation	Block

Additional Information

Date Listed	May 21st, 2025
Days on Market	75
Zoning	Zone 23

DATA IS DEEMED RELIABLE BUT IS NOT GUARANTEED ACCURATE BY THE REALTORS® ASSOCIATION OF EDMONTON. COPYRIGHT 2025 BY THE REALTORS® ASSOCIATION OF EDMONTON. ALL RIGHTS RESERVED. Trademarks are owned or controlled by the Canadian Real Estate Association (CREA) and identify real estate professionals who are members of CREA (REALTOR®, REALTORS®) and/or the quality of services they provide (MLS®, Multiple Listing Service®)

Listing information last updated on August 4th, 2025 at 4:32am MDT