

\$434,900 - 4420 Prowse Road, Edmonton

MLS® #E4437806

\$434,900

3 Bedroom, 2.50 Bathroom, 1,416 sqft

Single Family on 0.00 Acres

Paisley, Edmonton, AB

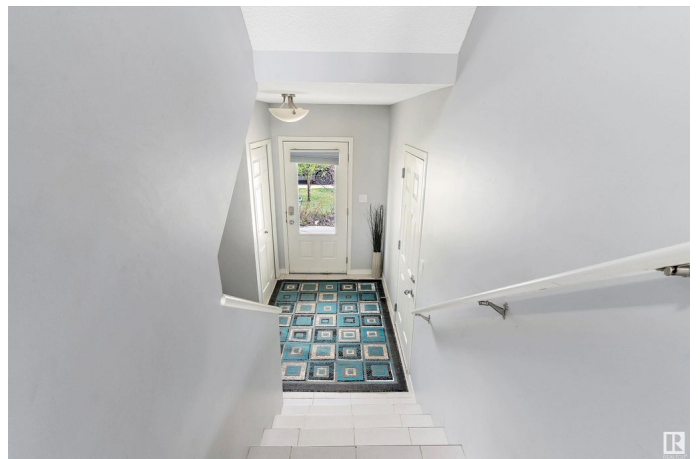
Welcome Home! This beautifully maintained 3-bedroom half duplex in the sought-after community of Paisley offers comfort, convenience, and style. Step inside to find a bright and open main floor layout featuring rich laminate flooring and a modern kitchen complete with stainless steel appliances—perfect for entertaining or enjoying family meals. Upstairs, you’ll love the spacious primary suite with a 4-piece ensuite, ideal for relaxing at the end of the day. Two additional bedrooms and a versatile bonus room provide plenty of space for a growing family, home office, or guests. This home also includes a single attached garage and a fully landscaped yard. Located in a vibrant and family-friendly neighbourhood, you’re just minutes from shopping, public transportation, parks, and the Edmonton International Airport. Whether you’re a first-time buyer, young family, or savvy investor, this property checks all the boxes. Don’t miss out on this incredible opportunity to own in Paisley!

Built in 2015

Essential Information

MLS® # E4437806

Price \$434,900



Bedrooms	3
Bathrooms	2.50
Full Baths	2
Half Baths	1
Square Footage	1,416
Acres	0.00
Year Built	2015
Type	Single Family
Sub-Type	Half Duplex
Style	2 Storey
Status	Active

Community Information

Address	4420 Prowse Road
Area	Edmonton
Subdivision	Paisley
City	Edmonton
County	ALBERTA
Province	AB
Postal Code	T6W 3A5

Amenities

Amenities	See Remarks
Parking	Single Garage Attached

Interior

Interior Features	ensuite bathroom
Appliances	Dishwasher-Built-In, Dryer, Garage Control, Garage Opener, Microwave Hood Fan, Refrigerator, Stove-Electric, Washer, Window Coverings
Heating	Forced Air-1, Natural Gas
Stories	2
Has Basement	Yes
Basement	Full, Unfinished

Exterior

Exterior	Wood, Vinyl
Exterior Features	Golf Nearby, Landscaped, Level Land, Schools, See Remarks
Roof	Asphalt Shingles
Construction	Wood, Vinyl

Foundation Slab

Additional Information

Date Listed May 22nd, 2025

Days on Market 26

Zoning Zone 55

DATA IS DEEMED RELIABLE BUT IS NOT GUARANTEED ACCURATE BY THE REALTORS® ASSOCIATION OF EDMONTON. COPYRIGHT 2025 BY THE REALTORS® ASSOCIATION OF EDMONTON. ALL RIGHTS RESERVED.Trademarks are owned or controlled by the Canadian Real Estate Association (CREA) and identify real estate professionals who are members of CREA (REALTOR®, REALTORS®) and/or the quality of services they provide (MLS®, Multiple Listing Service®)

Listing information last updated on June 16th, 2025 at 10:32pm MDT