

Courtesy Of Jesse D Maclean Of Century 21 Masters

\$619,500 - 8214 6 Avenue, Edmonton

MLS® #E4437980

\$619,500

3 Bedroom, 3.50 Bathroom, 1,862 sqft

Single Family on 0.00 Acres

Ellerslie, Edmonton, AB

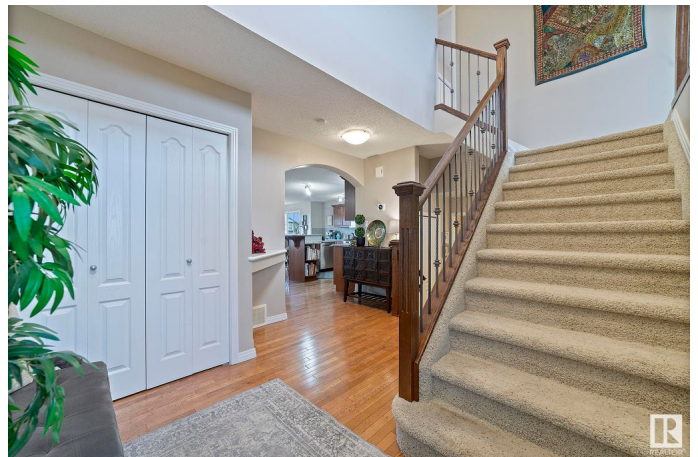
Here's the one you've been waiting for! This 2 storey walkout has been impeccably maintained by the same owners for the last 16 years. Main floor offers an open foyer with plenty of closet space. Open concept kitchen with a large island, a plethora of cabinetry, stone countertops and SS appliances. Living area is complete with a gas fireplace and the large dining area offers an abundance of natural light leading to your maintenance free deck overlooking the pond and green space. Upper level boasts a large bonus room with 10' ceilings, primary bedroom with large 4pc ensuite and WIC, 2 additional bedrooms, main bath and a linen closet. Fully finished basement offers an open floor plan complete with another full bathroom living area and kitchenette. There's ample space to add a 4th bedroom. Beautifully landscaped yard is great for family gatherings and quiet nights around the fire. Many updates over the years including A/C, Bosch DW, Roof (2022), Electrolux W/D c/W pedestals and much more. WELCOME HOME!!!

Built in 2005

Essential Information

MLS® # E4437980

Price \$619,500



Bedrooms	3
Bathrooms	3.50
Full Baths	3
Half Baths	1
Square Footage	1,862
Acres	0.00
Year Built	2005
Type	Single Family
Sub-Type	Detached Single Family
Style	2 Storey
Status	Active

Community Information

Address	8214 6 Avenue
Area	Edmonton
Subdivision	Ellerslie
City	Edmonton
County	ALBERTA
Province	AB
Postal Code	T6X 1L6

Amenities

Amenities	Air Conditioner, Deck, Walkout Basement
Parking	Double Garage Attached

Interior

Interior Features	ensuite bathroom
Appliances	Air Conditioning-Central, Dryer, Garage Control, Garage Opener, Refrigerator, Stove-Gas, Washer, Window Coverings, Wine/Beverage Cooler, Dishwasher-Two, Microwave Hood Fan-Two
Heating	Forced Air-1, Natural Gas
Stories	3
Has Basement	Yes
Basement	Full, Finished

Exterior

Exterior	Wood, Stone, Vinyl
Exterior Features	Backs Onto Park/Trees, Fenced
Roof	Asphalt Shingles

Construction	Wood, Stone, Vinyl
Foundation	Concrete Perimeter

Additional Information

Date Listed	May 21st, 2025
Days on Market	26
Zoning	Zone 53

DATA IS DEEMED RELIABLE BUT IS NOT GUARANTEED ACCURATE BY THE REALTORS® ASSOCIATION OF EDMONTON. COPYRIGHT 2025 BY THE REALTORS® ASSOCIATION OF EDMONTON. ALL RIGHTS RESERVED.Trademarks are owned or controlled by the Canadian Real Estate Association (CREA) and identify real estate professionals who are members of CREA (REALTOR®, REALTORS®) and/or the quality of services they provide (MLS®, Multiple Listing Service®)

Listing information last updated on June 16th, 2025 at 12:32pm MDT