

## \$524,900 - 21 Ashton Gate, Spruce Grove

MLS® #E4438088

**\$524,900**

3 Bedroom, 2.50 Bathroom, 1,766 sqft

Single Family on 0.00 Acres

Aspen Glen, Spruce Grove, AB

Move-in ready family home in Aspen Glen! This beautifully maintained 2-storey offers over 1,700 sq ft above grade plus a fully finished basement. The main floor boasts a spacious open-concept layout with hardwood floors, built-in sound system, and fresh paint. The kitchen features espresso cabinets, stainless steel appliances, and a large central island, flowing into the dining area—ideal for entertaining. A convenient 2-pc bath completes the main floor. Upstairs, enjoy a massive bonus room with built-in speakers and large windows, a 4-pc bath, and 3 generous bedrooms. The primary suite includes a walk-in closet, 4-pc ensuite with a soaker tub, and added sliding door for privacy. The finished basement offers soft carpet—perfect for a playroom, rec space, or extra bedroom. The large double attached garage provides ample storage, and the professionally landscaped backyard is a true oasis. This stylish, functional home is ready for your family—don't miss out!

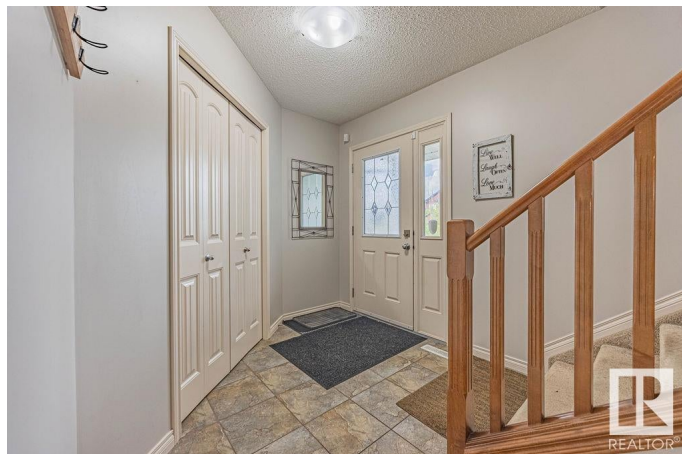
Built in 2009

### Essential Information

MLS® # E4438088

Price \$524,900

Bedrooms 3



Bathrooms	2.50
Full Baths	2
Half Baths	1
Square Footage	1,766
Acres	0.00
Year Built	2009
Type	Single Family
Sub-Type	Detached Single Family
Style	2 Storey
Status	Active

### **Community Information**

Address	21 Ashton Gate
Area	Spruce Grove
Subdivision	Aspen Glen
City	Spruce Grove
County	ALBERTA
Province	AB
Postal Code	T7X 0H9

### **Amenities**

Amenities	Deck, Fire Pit, Gazebo, Hot Water Instant, No Smoking Home
Parking	Double Garage Attached, Heated

### **Interior**

Interior Features	ensuite bathroom
Appliances	Dishwasher-Built-In, Dryer, Garage Control, Refrigerator, Stove-Electric, Washer, TV Wall Mount
Heating	Forced Air-1, Natural Gas
Fireplace	Yes
Fireplaces	Tile Surround
Stories	3
Has Basement	Yes
Basement	Full, Finished

### **Exterior**

Exterior	Wood, Vinyl
Exterior Features	Fenced, Playground Nearby, Public Transportation, Schools
Roof	Asphalt Shingles

Construction	Wood, Vinyl
Foundation	Concrete Perimeter

**Additional Information**

Date Listed	May 23rd, 2025
Days on Market	24
Zoning	Zone 91

DATA IS DEEMED RELIABLE BUT IS NOT GUARANTEED ACCURATE BY THE REALTORS® ASSOCIATION OF EDMONTON. COPYRIGHT 2025 BY THE REALTORS® ASSOCIATION OF EDMONTON. ALL RIGHTS RESERVED.Trademarks are owned or controlled by the Canadian Real Estate Association (CREA) and identify real estate professionals who are members of CREA (REALTOR®, REALTORS®) and/or the quality of services they provide (MLS®, Multiple Listing Service®)

Listing information last updated on June 16th, 2025 at 4:17pm MDT