

\$790,000 - 3625 Keswick Boulevard, Edmonton

MLS® #E4438128

\$790,000

6 Bedroom, 4.00 Bathroom, 2,232 sqft

Single Family on 0.00 Acres

Keswick Area, Edmonton, AB

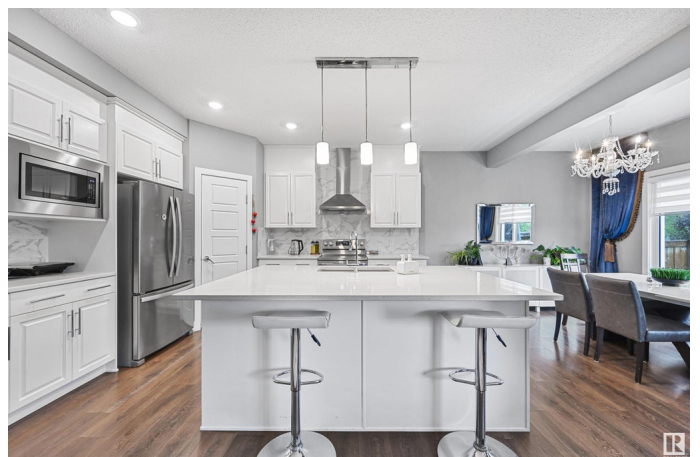
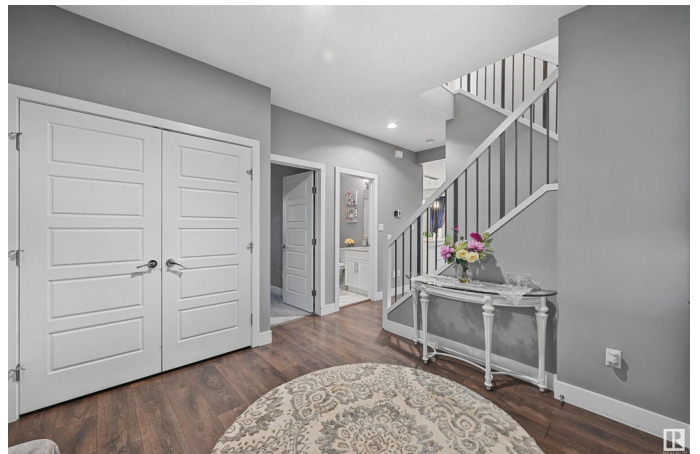
Upgraded, contemporary, turn-key home in prestigious Keswick on The River w/ 2,250sf AG! Main floor boasts bedrm/den & 4pc bathrm (perfect for extended family). Open concept living rm w/ feature electric fireplace, spacious dining nook & elegant kitchen boasting full-height cabinetry, massive quartz island, stainless steel appliances (new hoodfan & d/w) & spacious pantry. Upstairs find a bright bonus room w/ lrg windows. Primary retreat has partial park views (like bonus rm) & generous sized walk-in closet & 5pc spa ensuite. 2 addtl bedrms, 4pc bathrm & walk-in laundry rm complete this level. Permitted basement provides addtl living space, 2 more bedrms & a 4th full bathrm. 2,900sf total living space w/ no work: professional landscaping, comp deck w/ pergola, sleek window coverings, efficient mechanical & finished basement! Great school, grocery, retail, restaurants, medical, gyms within the immediate area. Trails & parks throughout the community (Keswick Playground 3 doors down). Perfect family home!

Built in 2017

Essential Information

MLS® # E4438128

Price \$790,000



Bedrooms	6
Bathrooms	4.00
Full Baths	4
Square Footage	2,232
Acres	0.00
Year Built	2017
Type	Single Family
Sub-Type	Detached Single Family
Style	2 Storey
Status	Active

Community Information

Address	3625 Keswick Boulevard
Area	Edmonton
Subdivision	Keswick Area
City	Edmonton
County	ALBERTA
Province	AB
Postal Code	T6W 3S5

Amenities

Amenities	Ceiling 9 ft., Hot Water Tankless, HRV System
Parking	Double Garage Attached, Over Sized

Interior

Interior Features	ensuite bathroom
Appliances	Dishwasher-Built-In, Dryer, Garage Control, Garage Opener, Hood Fan, Oven-Microwave, Refrigerator, Stove-Electric, Washer, Window Coverings
Heating	Forced Air-1, Natural Gas
Fireplace	Yes
Fireplaces	Insert
Stories	3
Has Basement	Yes
Basement	Full, Finished

Exterior

Exterior	Wood, Stone, Vinyl
Exterior Features	Airport Nearby, Fenced, Golf Nearby, Landscaped, Park/Reserve,

Playground Nearby, Public Transportation, Schools, Shopping Nearby,
See Remarks

Roof	Asphalt Shingles
Construction	Wood, Stone, Vinyl
Foundation	Concrete Perimeter

School Information

Elementary	JoeyMoss/JoanCarr
Middle	JoeyMoss/JoanCarr
High	LillianOsborne/FMMcCaffery

Additional Information

Date Listed	May 23rd, 2025
Days on Market	74
Zoning	Zone 56
HOA Fees	350
HOA Fees Freq.	Annually

DATA IS DEEMED RELIABLE BUT IS NOT GUARANTEED ACCURATE BY THE REALTORS® ASSOCIATION OF EDMONTON. COPYRIGHT 2025 BY THE REALTORS® ASSOCIATION OF EDMONTON. ALL RIGHTS RESERVED.Trademarks are owned or controlled by the Canadian Real Estate Association (CREA) and identify real estate professionals who are members of CREA (REALTOR®, REALTORS®) and/or the quality of services they provide (MLS®, Multiple Listing Service®)

Listing information last updated on August 5th, 2025 at 2:32am MDT