

\$363,800 - 5 804 Welsh Drive, Edmonton

MLS® #E4438453

\$363,800

3 Bedroom, 2.50 Bathroom, 1,531 sqft
Condo / Townhouse on 0.00 Acres

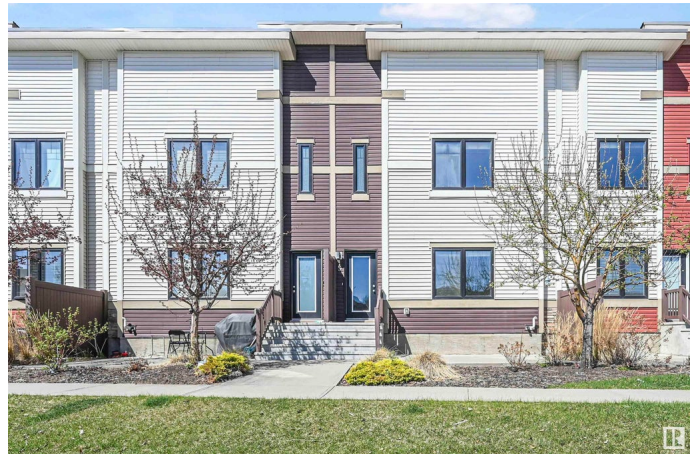
Walker, Edmonton, AB

Bright and spacious 3 bedroom/2.5 bath townhouse in the desirable Walker neighborhood with huge square footage! Perfect for first time home owners or investors! Main floor features 9' ceilings & a large South facing window. The kitchen has a functional layout, stainless steel appliances, granite countertops, walk-in pantry & eating bar. The main level is equipped with a half bath, laundry, & vinyl flooring. 3 well sized bedrooms located on the upper level. Primary bedroom has a 4pc ensuite & walk in closet. Plus 2nd 4pc bathroom upstairs. Other features include a double attached garage, a flex room for office or play room, plenty of storage, energy-efficient mechanical including tankless hot water for a lower utility bill. This well maintained complex offers visitor parking & is conveniently located close to shopping, walking trails & lake. Close proximity to Anthony Henday, South Common, schools & public transportation. A must see!

Built in 2015

Essential Information

MLS® #	E4438453
Price	\$363,800
Bedrooms	3
Bathrooms	2.50



Full Baths	2
Half Baths	1
Square Footage	1,531
Acres	0.00
Year Built	2015
Type	Condo / Townhouse
Sub-Type	Townhouse
Style	2 Storey
Status	Active

Community Information

Address	5 804 Welsh Drive
Area	Edmonton
Subdivision	Walker
City	Edmonton
County	ALBERTA
Province	AB
Postal Code	T6X 1Y8

Amenities

Amenities	Ceiling 9 ft., Detectors Smoke, Parking-Visitor, Patio
Parking	Double Garage Attached

Interior

Interior Features	ensuite bathroom
Appliances	Dishwasher-Built-In, Dryer, Garage Control, Garage Opener, Microwave Hood Fan, Refrigerator, Stove-Electric, Washer, Window Coverings
Heating	Forced Air-1, Natural Gas
Stories	3
Has Basement	Yes
Basement	Partial, Finished

Exterior

Exterior	Wood, Vinyl
Exterior Features	Landscaped, Public Transportation, Schools, Shopping Nearby
Roof	SBS Roofing System
Construction	Wood, Vinyl
Foundation	Concrete Perimeter

School Information

Elementary	Ellerslie/CorpusChristi
Middle	Ellerslie/CorpusChristi
High	JPercyPage/HolyTrinity

Additional Information

Date Listed	May 23rd, 2025
Days on Market	26
Zoning	Zone 53
Condo Fee	\$177

DATA IS DEEMED RELIABLE BUT IS NOT GUARANTEED ACCURATE BY THE REALTORS® ASSOCIATION OF EDMONTON. COPYRIGHT 2025 BY THE REALTORS® ASSOCIATION OF EDMONTON. ALL RIGHTS RESERVED.Trademarks are owned or controlled by the Canadian Real Estate Association (CREA) and identify real estate professionals who are members of CREA (REALTOR®, REALTORS®) and/or the quality of services they provide (MLS®, Multiple Listing Service®)

Listing information last updated on June 18th, 2025 at 3:32am MDT