

\$265,000 - 101 8730 82 Avenue, Edmonton

MLS® #E4439234

\$265,000

2 Bedroom, 2.00 Bathroom, 962 sqft

Condo / Townhouse on 0.00 Acres

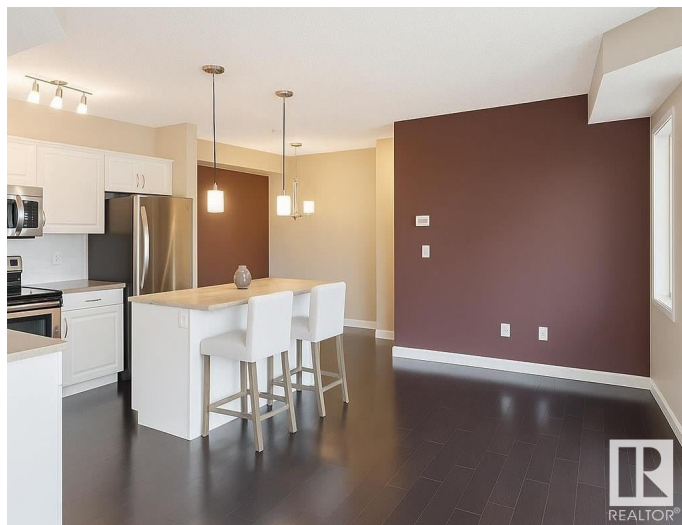
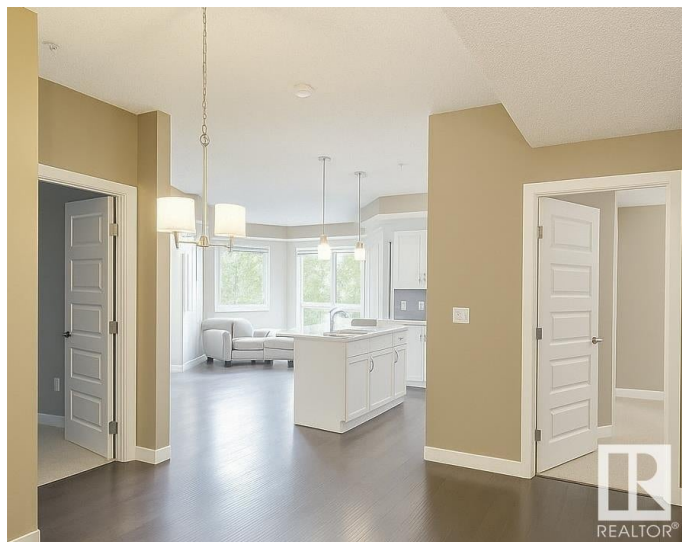
Bonnie Doon, Edmonton, AB

Welcome to this bright and spacious two-bedroom, two-bath ground-floor unit, offering the perfect blend of comfort and convenience. The open-concept layout features a modern kitchen with stainless steel appliances, an island with a breakfast bar, and a cozy dining area that flows seamlessly into the inviting living space. Step outside onto your patio—ideal for morning coffee or evening relaxation. The primary bedroom boasts a walk-in closet and a 4-piece ensuite, while the second bedroom offers flexibility for guests or a home office. Additional highlights include in-suite laundry and an underground parking stall. Located close to public transit, parks, shops, and all amenities, this unit is the perfect place to call home!

Built in 2009

Essential Information

| | |
|----------------|-----------|
| MLS® # | E4439234 |
| Price | \$265,000 |
| Bedrooms | 2 |
| Bathrooms | 2.00 |
| Full Baths | 2 |
| Square Footage | 962 |
| Acres | 0.00 |
| Year Built | 2009 |



| | |
|----------|------------------------|
| Type | Condo / Townhouse |
| Sub-Type | Lowrise Apartment |
| Style | Single Level Apartment |
| Status | Active |

Community Information

| | |
|-------------|--------------------|
| Address | 101 8730 82 Avenue |
| Area | Edmonton |
| Subdivision | Bonnie Doon |
| City | Edmonton |
| County | ALBERTA |
| Province | AB |
| Postal Code | T6C 0Z1 |

Amenities

| | |
|-----------|--------------------|
| Amenities | Patio |
| Parking | Stall, Underground |

Interior

| | |
|-------------------|--|
| Interior Features | ensuite bathroom |
| Appliances | Dishwasher-Built-In, Dryer, Microwave Hood Fan, Refrigerator, Stove-Electric, Washer |
| Heating | Forced Air-1, Natural Gas |
| # of Stories | 4 |
| Stories | 1 |
| Has Basement | Yes |
| Basement | None, No Basement |

Exterior

| | |
|-------------------|---|
| Exterior | Wood, Stone, Stucco |
| Exterior Features | Low Maintenance Landscape, Park/Reserve, Playground Nearby, Public Transportation, Schools, Shopping Nearby |
| Roof | Asphalt Shingles |
| Construction | Wood, Stone, Stucco |
| Foundation | Concrete Perimeter |

Additional Information

| | |
|----------------|----------------|
| Date Listed | May 28th, 2025 |
| Days on Market | 20 |

| | |
|-----------|---------|
| Zoning | Zone 18 |
| Condo Fee | \$507 |

DATA IS DEEMED RELIABLE BUT IS NOT GUARANTEED ACCURATE BY THE REALTORS® ASSOCIATION OF EDMONTON. COPYRIGHT 2025 BY THE REALTORS® ASSOCIATION OF EDMONTON. ALL RIGHTS RESERVED. Trademarks are owned or controlled by the Canadian Real Estate Association (CREA) and identify real estate professionals who are members of CREA (REALTOR®, REALTORS®) and/or the quality of services they provide (MLS®, Multiple Listing Service®)

Listing information last updated on June 17th, 2025 at 1:17pm MDT