

# \$434,900 - 26409 Twp Rd 540, Rural Sturgeon County

MLS® #E4439615

**\$434,900**

0 Bedroom, 0.00 Bathroom,  
Rural on 4.30 Acres

None, Rural Sturgeon County, AB

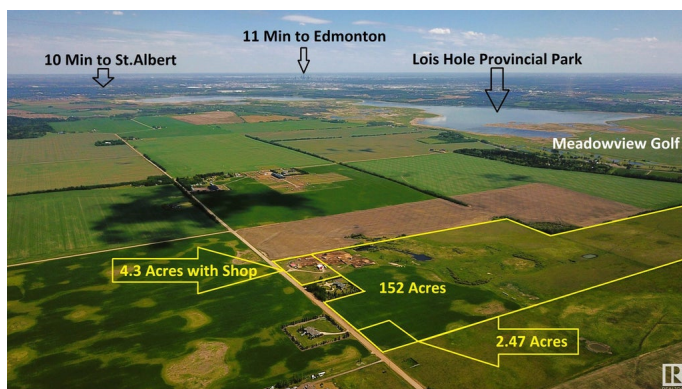
Acreage READY FOR DEVELOPMENT just 10 MIN FROM ST.ALBERT Edmonton or Spruce Grove! 4.3 acres out of subdivision and Zoned AG. BUILD YOUR DREAM HOME and zoning allows for a SECOND RESIDENCE if you want. Already on site is a 42x48 SHOP with 100amp power, 14x14 overhead door plus a 10x12 office with mezzanine above. Another METAL SHED 32x42 with 100amp power. GATED and partially fenced. LESS THAN 1KM OF GRAVEL. Great opportunity to get into the country and still be close to town. BUSSING TO SCHOOL IN ST.ALBERT K-9. \*Vendor Financing available

## Essential Information

MLS® #	E4439615
Price	\$434,900
Bathrooms	0.00
Acres	4.30
Type	Rural
Sub-Type	Vacant Lot/Land
Status	Active

## Community Information

Address	26409 Twp Rd 540
Area	Rural Sturgeon County



Subdivision	None
City	Rural Sturgeon County
County	ALBERTA
Province	AB
Postal Code	T8T 1K6

### **Exterior**

Exterior Features    Airport Nearby, Flat Site, Level Land, See Remarks

### **Additional Information**

Date Listed	May 30th, 2025
Days on Market	16
Zoning	Zone 70

DATA IS DEEMED RELIABLE BUT IS NOT GUARANTEED ACCURATE BY THE REALTORS® ASSOCIATION OF EDMONTON. COPYRIGHT 2025 BY THE REALTORS® ASSOCIATION OF EDMONTON. ALL RIGHTS RESERVED. Trademarks are owned or controlled by the Canadian Real Estate Association (CREA) and identify real estate professionals who are members of CREA (REALTOR®, REALTORS®) and/or the quality of services they provide (MLS®, Multiple Listing Service®)

Listing information last updated on June 15th, 2025 at 3:32pm MDT