

\$722,500 - 11028 84 Avenue, Edmonton

MLS® #E4440780

\$722,500

5 Bedroom, 3.50 Bathroom, 1,566 sqft

Single Family on 0.00 Acres

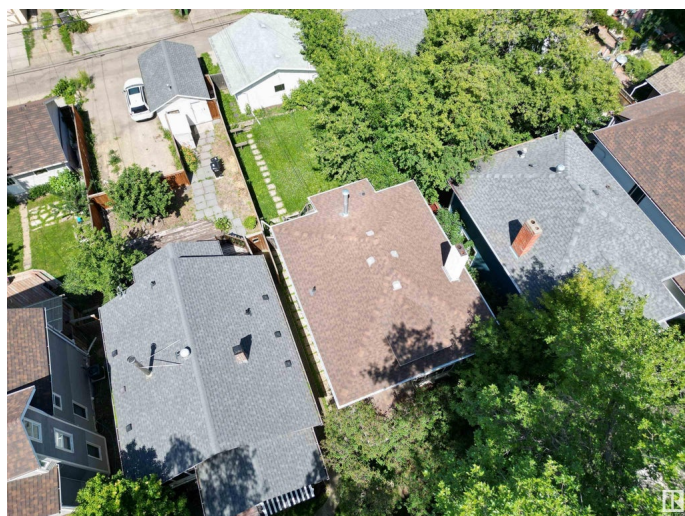
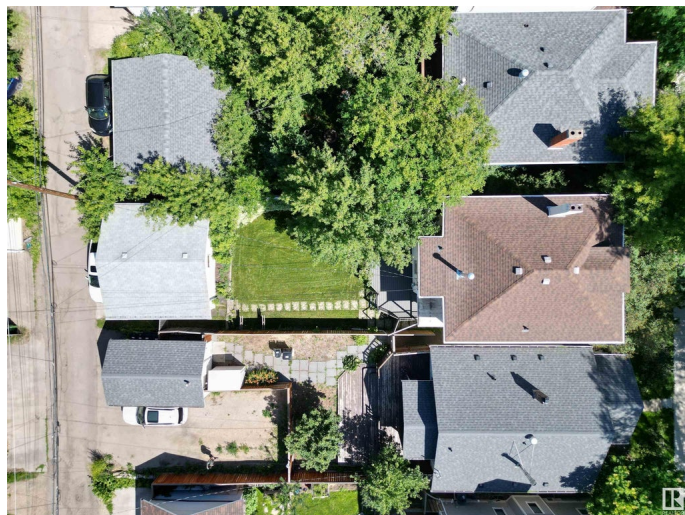
Garneau, Edmonton, AB

Charming Garneau century home offering the perfect blend of historic character and modern upgrades. This beautifully renovated two-storey features 5 bedrooms, 3.5 bathrooms, and a fully finished basement with second kitchen, laundry, and private entry. Tastefully updated with a newer roof, attic insulation, renovated ensuite, a renovated kitchen with granite counters, newer hardwood (main), upgraded plumbing, and new basement windows. The home sits on a large lot with mature trees and an unbeatable location just steps from the University of Alberta. The newer, oversized double garage adds plenty of storage and function. A rare opportunity to own a piece of Edmonton's history with the comfort of today's standards.

Built in 1914

Essential Information

| | |
|----------------|-----------|
| MLS® # | E4440780 |
| Price | \$722,500 |
| Bedrooms | 5 |
| Bathrooms | 3.50 |
| Full Baths | 3 |
| Half Baths | 1 |
| Square Footage | 1,566 |
| Acres | 0.00 |



| | |
|------------|------------------------|
| Year Built | 1914 |
| Type | Single Family |
| Sub-Type | Detached Single Family |
| Style | 2 Storey |
| Status | Active |

Community Information

| | |
|-------------|-----------------|
| Address | 11028 84 Avenue |
| Area | Edmonton |
| Subdivision | Garneau |
| City | Edmonton |
| County | ALBERTA |
| Province | AB |
| Postal Code | T6E 0V7 |

Amenities

| | |
|-----------|---|
| Amenities | Deck, Front Porch, Insulation-Upgraded, See Remarks |
| Parking | Double Garage Detached |

Interior

| | |
|-------------------|---|
| Interior Features | ensuite bathroom |
| Appliances | Dishwasher-Built-In, Microwave Hood Fan, Oven-Microwave, Window Coverings, See Remarks, Dryer-Two, Refrigerators-Two, Stoves-Two, Washers-Two |
| Heating | Forced Air-1, Natural Gas |
| Fireplace | Yes |
| Fireplaces | Brick Facing |
| Stories | 3 |
| Has Suite | Yes |
| Has Basement | Yes |
| Basement | Full, Finished |

Exterior

| | |
|-------------------|---|
| Exterior | Wood, Stucco |
| Exterior Features | Fenced, Playground Nearby, Public Transportation, Schools, Shopping Nearby, Treed Lot |
| Roof | Asphalt Shingles |
| Construction | Wood, Stucco |
| Foundation | Block |

Additional Information

Date Listed June 6th, 2025
Days on Market 60
Zoning Zone 15

DATA IS DEEMED RELIABLE BUT IS NOT GUARANTEED ACCURATE BY THE REALTORS® ASSOCIATION OF EDMONTON. COPYRIGHT 2025 BY THE REALTORS® ASSOCIATION OF EDMONTON. ALL RIGHTS RESERVED.Trademarks are owned or controlled by the Canadian Real Estate Association (CREA) and identify real estate professionals who are members of CREA (REALTOR®, REALTORS®) and/or the quality of services they provide (MLS®, Multiple Listing Service®)
Listing information last updated on August 5th, 2025 at 2:32am MDT