

\$429,900 - 5654 Juchli Avenue, Edmonton

MLS® #E4440845

\$429,900

3 Bedroom, 2.50 Bathroom, 1,324 sqft

Single Family on 0.00 Acres

Griesbach, Edmonton, AB

PREMIUM TOWNHOME IN GRIESBACH!

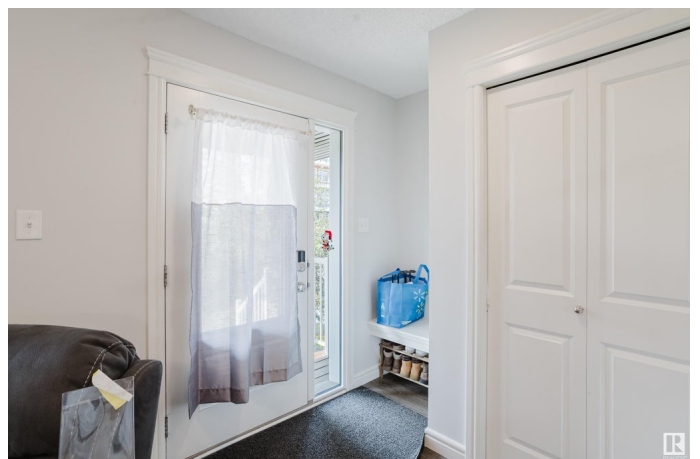
This spacious 2 storey home with NO CONDO FEES is absolutely gorgeous. Featuring loads of upgrades including quartz counters, high end s/s appliances, quality flooring, designer lighting and a stylish open concept floor plan. The main floor has a bright entry way with lots of closet space, the living room has big windows providing tons of natural light & flows through to the dining area. The chef's kitchen has modern white cabinetry, quartz counters, eat up island, plenty of counterspace & elegant subway tiled backsplash. The main level is completed with a 2pce bath & convenient laundry/mud room. Upstairs has 3 generous bedrooms & family bathroom, the primary bedroom has a 4 pce ensuite and big walk in closet. The exterior has terrific curb appeal, a fenced SOUTH facing yard and double detached garage. Griesbach offers a fabulous lake and park system, restaurants, and great schools. Only 10 minutes to downtown – the location is fantastic and offers a superb quality of life!

Built in 2019

Essential Information

MLS® # E4440845

Price \$429,900



Bedrooms	3
Bathrooms	2.50
Full Baths	2
Half Baths	1
Square Footage	1,324
Acres	0.00
Year Built	2019
Type	Single Family
Sub-Type	Residential Attached
Style	2 Storey
Status	Active

Community Information

Address	5654 Juchli Avenue
Area	Edmonton
Subdivision	Griesbach
City	Edmonton
County	ALBERTA
Province	AB
Postal Code	T5E 6X5

Amenities

Amenities	Detectors Smoke, See Remarks
Parking Spaces	2
Parking	Double Garage Detached

Interior

Interior Features	ensuite bathroom
Appliances	Dishwasher-Built-In, Dryer, Refrigerator, Stove-Electric, Washer
Heating	Forced Air-1, Natural Gas
Stories	2
Has Basement	Yes
Basement	Full, Unfinished

Exterior

Exterior	Wood, Stone, Vinyl
Exterior Features	Fenced, Landscaped, Playground Nearby, Public Transportation, Schools, Shopping Nearby
Roof	Asphalt Shingles

Construction	Wood, Stone, Vinyl
Foundation	Concrete Perimeter

Additional Information

Date Listed	June 5th, 2025
Days on Market	51
Zoning	Zone 27

DATA IS DEEMED RELIABLE BUT IS NOT GUARANTEED ACCURATE BY THE REALTORS® ASSOCIATION OF EDMONTON. COPYRIGHT 2025 BY THE REALTORS® ASSOCIATION OF EDMONTON. ALL RIGHTS RESERVED.Trademarks are owned or controlled by the Canadian Real Estate Association (CREA) and identify real estate professionals who are members of CREA (REALTOR®, REALTORS®) and/or the quality of services they provide (MLS®, Multiple Listing Service®)

Listing information last updated on July 26th, 2025 at 2:32am MDT