

**\$129,900 - 132 4404 122 Street, Edmonton**

MLS® #E4440900

**\$129,900**

2 Bedroom, 1.50 Bathroom, 1,119 sqft  
Condo / Townhouse on 0.00 Acres

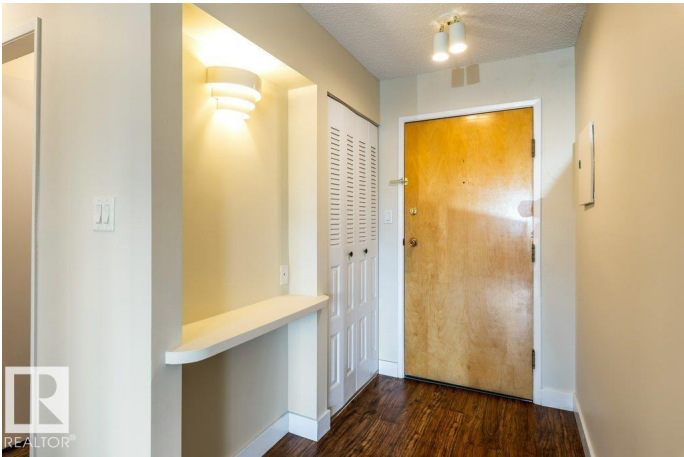
Aspen Gardens, Edmonton, AB

Aspen Garden Estates â€“ Exceptional Value in a Prime Location! Just move in and enjoy this spacious 1,099 sq ft single-level apartment featuring 2 generous bedrooms, 1.5 baths, in-suite laundry, an open kitchen with adjacent dining area, and a very large living room. Step outside to your private balcony and enjoy the convenience of one energized covered parking stall. This well-maintained complex offers terrific amenities including a fitness room, party room, and a large outdoor deck. Condo fees include electricity, heat, and water. Ideally located in the highly sought-after Aspen Gardens community in Southwest Edmonton, you're steps away from the Whitemud Ravine, Snow Valley Ski Hill, and top-rated schools including the University of Alberta. With easy access to shopping, restaurants, public transportation, the LRT, and major roadways, this is truly a great place to call home!

Built in 1976

**Essential Information**

|            |           |
|------------|-----------|
| MLS® #     | E4440900  |
| Price      | \$129,900 |
| Bedrooms   | 2         |
| Bathrooms  | 1.50      |
| Full Baths | 1         |
| Half Baths | 1         |



|                |                        |
|----------------|------------------------|
| Square Footage | 1,119                  |
| Acres          | 0.00                   |
| Year Built     | 1976                   |
| Type           | Condo / Townhouse      |
| Sub-Type       | Lowrise Apartment      |
| Style          | Single Level Apartment |
| Status         | Active                 |

### Community Information

|             |                     |
|-------------|---------------------|
| Address     | 132 4404 122 Street |
| Area        | Edmonton            |
| Subdivision | Aspen Gardens       |
| City        | Edmonton            |
| County      | ALBERTA             |
| Province    | AB                  |
| Postal Code | T6J 4A9             |

### Amenities

|           |                                     |
|-----------|-------------------------------------|
| Amenities | Parking-Visitor, Patio, See Remarks |
| Parking   | Stall                               |

### Interior

|                   |   |
|-------------------|---|
| Interior Features | ensuite bathroom  |
| Appliances        | Dishwasher-Built-In, Refrigerator, Stacked Washer/Dryer, Stove-Electric |
| Heating           | Hot Water, Natural Gas  |
| # of Stories      | 4   |
| Stories           | 1   |
| Has Basement      | Yes   |
| Basement          | None, No Basement   |

### Exterior

|                   |   |
|-------------------|---|
| Exterior          | Wood, Brick, Vinyl  |
| Exterior Features | Playground Nearby, Public Transportation, Schools, Shopping Nearby, See Remarks |
| Roof              | Asphalt Shingles  |
| Construction      | Wood, Brick, Vinyl  |
| Foundation        | Concrete Perimeter  |

### Additional Information

|                |                |
|----------------|----------------|
| Date Listed    | June 6th, 2025 |
| Days on Market | 76             |
| Zoning         | Zone 16        |
| Condo Fee      | \$790          |

DATA IS DEEMED RELIABLE BUT IS NOT GUARANTEED ACCURATE BY THE REALTORS® ASSOCIATION OF EDMONTON. COPYRIGHT 2025 BY THE REALTORS® ASSOCIATION OF EDMONTON. ALL RIGHTS RESERVED. Trademarks are owned or controlled by the Canadian Real Estate Association (CREA) and identify real estate professionals who are members of CREA (REALTOR®, REALTORS®) and/or the quality of services they provide (MLS®, Multiple Listing Service®)

Listing information last updated on August 21st, 2025 at 5:47am MDT