

Courtesy Of Michelle Elliott Of Real Broker

\$1,495,000 - 21031 Twp Rd 530, Rural Strathcona County

MLS® #E4441301

\$1,495,000

3 Bedroom, 2.50 Bathroom, 2,757 sqft

Rural on 40.03 Acres

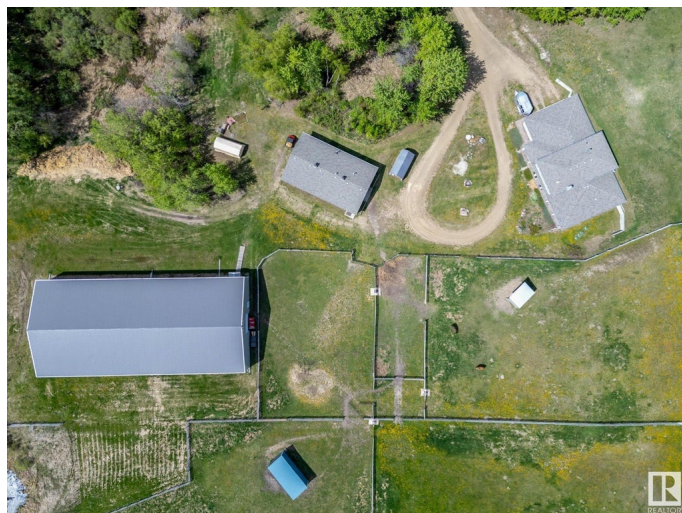
None, Rural Strathcona County, AB

Welcome to your dream country retreat! This immaculate, custom-built home sits on 40 picturesque ACRES, thoughtfully designed for comfortable living and premium equestrian use. Step inside this spacious and airy, well-maintained home featuring two generous bedrooms on the main floor, a BRIGHT OPEN CONCEPT living area, flooding the space with NATURAL LIGHT. Upstairs, enjoy a large RECREATION ROOM perfect for a home office, games room, or gym, plus a private master suite retreat. Whether you're a hobbyist or a professional EQUESTRIAN, this property is a rare find! The property is FULLY FENCED with 2 PASTURES, a 6 stall BARN and a breathtaking 152' x 70' INDOOR RIDING ARENA that provides year-round riding opportunities in a stunning setting. This acreage is truly a one-of-a-kind opportunity.

Built in 2006

Essential Information

MLS® #	E4441301
Price	\$1,495,000
Bedrooms	3
Bathrooms	2.50
Full Baths	2



Half Baths	1
Square Footage	2,757
Acres	40.03
Year Built	2006
Type	Rural
Sub-Type	Detached Single Family
Style	1 and Half Storey
Status	Active

Community Information

Address	21031 Twp Rd 530
Area	Rural Strathcona County
Subdivision	None
City	Rural Strathcona County
County	ALBERTA
Province	AB
Postal Code	T8G 2C7

Amenities

Features	Deck
----------	------

Interior

Interior Features	ensuite bathroom
Heating	Fan Coil, In Floor Heat System, Water
Fireplace	Yes
Stories	2
Has Basement	Yes
Basement	None, No Basement

Exterior

Exterior	Wood
Exterior Features	Fenced, Landscaped
Construction	Wood
Foundation	Insulated Concrete Form

Additional Information

Date Listed	June 9th, 2025
Days on Market	47
Zoning	Zone 80

DATA IS DEEMED RELIABLE BUT IS NOT GUARANTEED ACCURATE BY THE REALTORS® ASSOCIATION OF EDMONTON. COPYRIGHT 2025 BY THE REALTORS® ASSOCIATION OF EDMONTON. ALL RIGHTS RESERVED.Trademarks are owned or controlled by the Canadian Real Estate Association (CREA) and identify real estate professionals who are members of CREA (REALTOR®, REALTORS®) and/or the quality of services they provide (MLS®, Multiple Listing Service®)

Listing information last updated on July 26th, 2025 at 7:02pm MDT