

\$245,000 - 10803 93 Street, Edmonton

MLS® #E4441511

\$245,000

3 Bedroom, 1.00 Bathroom, 1,188 sqft

Single Family on 0.00 Acres

McCauley, Edmonton, AB

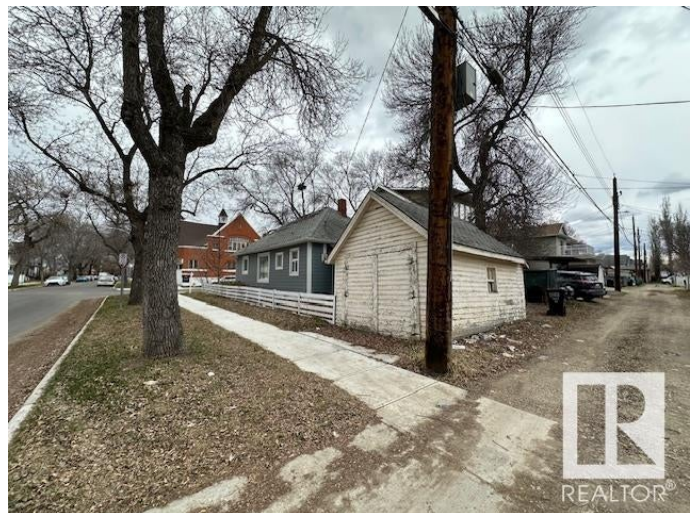
CORNER LOT MUST BE SEEN!! 1150+S/F
Modern Character Cape Cod home!
THOUSANDS SPENT over the years on upgrades! This **AMAZING** charming and well maintained **SPACIOUS 1.5 STOREY** in the wonderful neighborhood of McCauley in North Edmonton. Kitty corner to a beautiful Church! Two blocks from the famous Spinelli's Italian Supermarket & McCauley Park! And the warm **SUN** shining all day long! Main floor features 9-foot ceilings, spacious kitchen with all appliances, a spacious 4-piece bathroom, 2 bedrooms on the main and a huge 3rd bedroom or flex room upstairs. Extra loft space for tons of storage! Full unspoiled basement. Detached garage. Upgrades include new H2O tank. Hardy board siding W/ Styrofoam insulation. Some new windows, flooring & paint. All Situated on a generously sized, fully fenced, and landscaped 33â€™™ x 73â€™™ lot, this home is perfect for first-time buyers or investors. **AMENITIES, SCHOOLS, MAJOR BUS ROUTES, LRT LINE, GROCERY STORES & RESTAURANTS, MEDICAL SERVICES. MINUTES FROM DOWN TOWN! BRING OFFERS!**

Built in 1912

Essential Information

MLS® #

E4441511



Price	\$245,000
Bedrooms	3
Bathrooms	1.00
Full Baths	1
Square Footage	1,188
Acres	0.00
Year Built	1912
Type	Single Family
Sub-Type	Detached Single Family
Style	1 and Half Storey
Status	Active

Community Information

Address	10803 93 Street
Area	Edmonton
Subdivision	Mccauley
City	Edmonton
County	ALBERTA
Province	AB
Postal Code	T5H 1Y7

Amenities

Amenities	On Street Parking, Ceiling 9 ft., Front Porch, Hot Water Natural Gas, No Animal Home, No Smoking Home
Parking Spaces	3
Parking	Over Sized, Single Garage Detached

Interior

Appliances	Dishwasher-Built-In, Dryer, Microwave Hood Fan, Refrigerator, Stove-Electric, Washer, Window Coverings
Heating	Forced Air-1, Natural Gas
Stories	2
Has Basement	Yes
Basement	Full, Unfinished

Exterior

Exterior	Wood, Hardie Board Siding
Exterior Features	Back Lane, Corner Lot, Fenced, Flat Site, Landscaped, Paved Lane, Playground Nearby, Private Setting, Public Transportation, Schools,

	Shopping Nearby
Roof	Asphalt Shingles
Construction	Wood, Hardie Board Siding
Foundation	Concrete Perimeter

Additional Information

Date Listed	June 10th, 2025
Days on Market	6
Zoning	Zone 13

DATA IS DEEMED RELIABLE BUT IS NOT GUARANTEED ACCURATE BY THE REALTORS® ASSOCIATION OF EDMONTON. COPYRIGHT 2025 BY THE REALTORS® ASSOCIATION OF EDMONTON. ALL RIGHTS RESERVED. Trademarks are owned or controlled by the Canadian Real Estate Association (CREA) and identify real estate professionals who are members of CREA (REALTOR®, REALTORS®) and/or the quality of services they provide (MLS®, Multiple Listing Service®)

Listing information last updated on June 15th, 2025 at 11:17pm MDT