

\$469,250 - 4586 Warbler Loop, Edmonton

MLS® #E4443864

\$469,250

4 Bedroom, 3.00 Bathroom, 1,619 sqft

Single Family on 0.00 Acres

Kinglet Gardens, Edmonton, AB

Introducing the Sapphire—a 1,615 sq ft home designed for comfort and functionality. With 9' ceilings on the main and basement floors and luxury vinyl plank flooring throughout the main level, this home blends style and smart design. The kitchen features quartz countertops, an island with eating ledge, Silgranit sink, pendant lighting, over-the-range microwave, full-height tile backsplash, and a large corner pantry. A front bedroom and full 3-piece bath with walk-in shower add flexibility. Large windows brighten the living and dining areas, with a central garden door providing backyard access. Upstairs includes a bonus room, a spacious primary suite with walk-in closet and 3-piece ensuite with tub/shower, two more bedrooms, a main 3-piece bath, and a laundry closet for a stackable washer/dryer. Brushed nickel plumbing and lighting fixtures, a separate side entrance, and basement rough-ins are included—making the Sapphire a beautifully balanced home for modern family living.

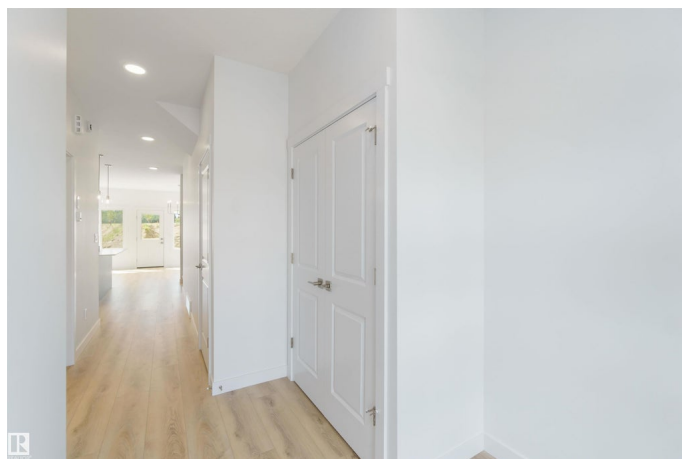
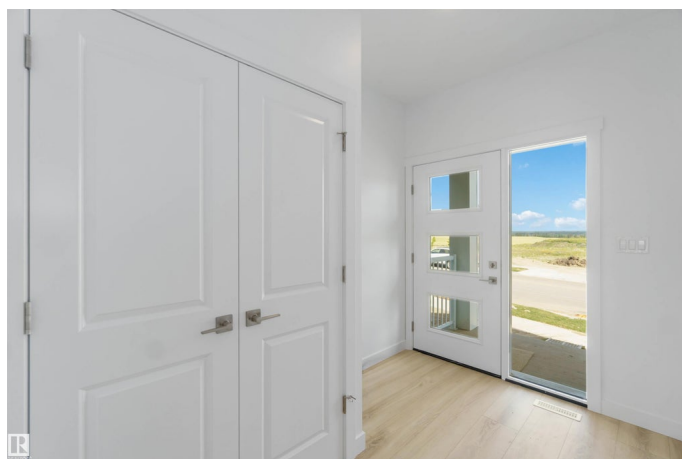
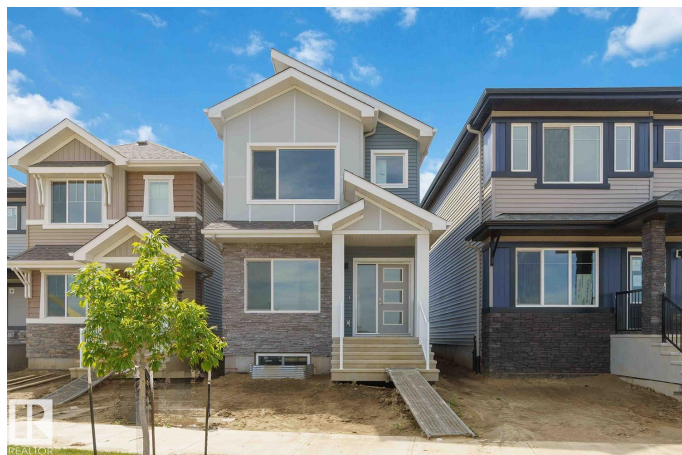
Built in 2025

Essential Information

MLS® # E4443864

Price \$469,250

Bedrooms 4



Bathrooms	3.00
Full Baths	3
Square Footage	1,619
Acres	0.00
Year Built	2025
Type	Single Family
Sub-Type	Detached Single Family
Style	2 Storey
Status	Active

Community Information

Address	4586 Warbler Loop
Area	Edmonton
Subdivision	Kinglet Gardens
City	Edmonton
County	ALBERTA
Province	AB
Postal Code	T5S 2C2

Amenities

Amenities	Ceiling 9 ft., Detectors Smoke, No Animal Home, No Smoking Home, Smart/Program. Thermostat, Television Connection, 9 ft. Basement Ceiling
Parking	Parking Pad Cement/Paved, Rear Drive Access

Interior

Interior Features	ensuite bathroom
Appliances	None
Heating	Forced Air-1, Natural Gas
Stories	2
Has Basement	Yes
Basement	Full, Unfinished

Exterior

Exterior	Wood, Vinyl
Exterior Features	Back Lane, No Through Road, Playground Nearby, Public Transportation, Schools, Shopping Nearby
Roof	Asphalt Shingles
Construction	Wood, Vinyl

Foundation Concrete Perimeter

Additional Information

Date Listed June 23rd, 2025
Days on Market 76
Zoning Zone 59

DATA IS DEEMED RELIABLE BUT IS NOT GUARANTEED ACCURATE BY THE REALTORS® ASSOCIATION OF EDMONTON. COPYRIGHT 2025 BY THE REALTORS® ASSOCIATION OF EDMONTON. ALL RIGHTS RESERVED.Trademarks are owned or controlled by the Canadian Real Estate Association (CREA) and identify real estate professionals who are members of CREA (REALTOR®, REALTORS®) and/or the quality of services they provide (MLS®, Multiple Listing Service®)
Listing information last updated on September 7th, 2025 at 3:32am MDT