

Courtesy Of Jill Jordan Of RE/MAX Real Estate

## \$415,000 - 16116 10 Avenue, Edmonton

MLS® #E4444375

**\$415,000**

3 Bedroom, 2.50 Bathroom, 1,536 sqft

Single Family on 0.00 Acres

Glenridding Heights, Edmonton, AB

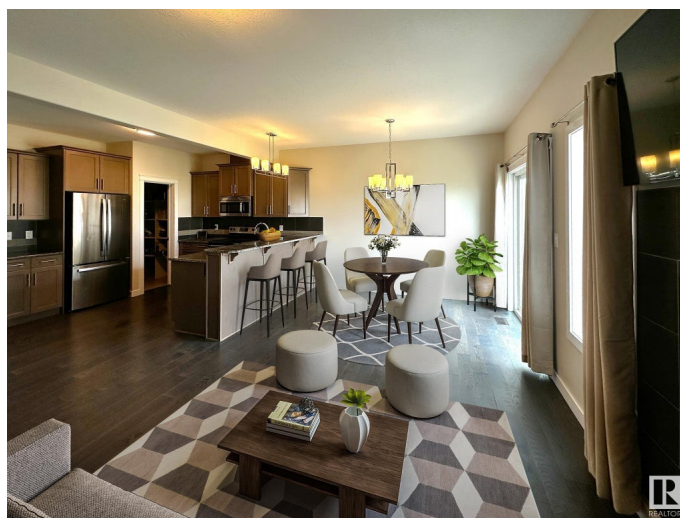
Welcome to this well-maintained half duplex in the sought-after community of Glenridding Heights. Perfect for families, this home features a bright living room with a gas fireplace and a modern kitchen with granite countertops, stainless steel appliances, a large island with eating bar, and a walk-through pantry. Upstairs offers a spacious primary suite with a walk-in closet and 4-piece ensuite, plus two additional bedrooms, a full 4-piece bath, convenient upstairs laundry, and a bonus room. The basement includes plumbing rough-ins and is ready for future development. Additional highlights include energy-efficient mechanical systems (50-gal water heater, high-efficiency furnace, HRV), a single attached insulated garage, and a fully landscaped and fenced yard. Ideally located close to Currents of Windermere, Anthony Henday, parks, walking trails, and future schools. A fantastic opportunity in a growing southwest Edmonton community. Come take a peek and fall in love! Some pictures are virtually staged.

Built in 2014

### Essential Information

MLS® # E4444375

Price \$415,000



Bedrooms	3
Bathrooms	2.50
Full Baths	2
Half Baths	1
Square Footage	1,536
Acres	0.00
Year Built	2014
Type	Single Family
Sub-Type	Half Duplex
Style	2 Storey
Status	Active

### **Community Information**

Address	16116 10 Avenue
Area	Edmonton
Subdivision	Glenridding Heights
City	Edmonton
County	ALBERTA
Province	AB
Postal Code	T6W 2G9

### **Amenities**

Amenities	Ceiling 9 ft., Deck, No Smoking Home
Parking Spaces	2
Parking	Insulated, Over Sized, Single Garage Attached

### **Interior**

Interior Features	ensuite bathroom
Appliances	Dishwasher-Built-In, Dryer, Garage Opener, Hood Fan, Refrigerator, Stove-Electric, Washer, Window Coverings
Heating	Forced Air-1, Natural Gas
Fireplace	Yes
Fireplaces	Stone Facing
Stories	2
Has Basement	Yes
Basement	Full, Unfinished

### **Exterior**

Exterior	Wood, Stone, Vinyl
----------	--------------------

Exterior Features	Flat Site, Public Transportation, Schools, Shopping Nearby
Lot Description	7.4x37.4x8.1x37.6
Roof	Asphalt Shingles
Construction	Wood, Stone, Vinyl
Foundation	Concrete Perimeter

### School Information

Elementary	St. Teresa
Middle	JH Picard
High	Strathcona

### Additional Information

Date Listed	June 26th, 2025
Days on Market	12
Zoning	Zone 56
HOA Fees	300
HOA Fees Freq.	Annually

DATA IS DEEMED RELIABLE BUT IS NOT GUARANTEED ACCURATE BY THE REALTORS® ASSOCIATION OF EDMONTON. COPYRIGHT 2025 BY THE REALTORS® ASSOCIATION OF EDMONTON. ALL RIGHTS RESERVED. Trademarks are owned or controlled by the Canadian Real Estate Association (CREA) and identify real estate professionals who are members of CREA (REALTOR®, REALTORS®) and/or the quality of services they provide (MLS®, Multiple Listing Service®)

Listing information last updated on July 8th, 2025 at 8:47am MDT