

## \$699,900 - 12 Caledonia Court, Leduc

MLS® #E4444518

**\$699,900**

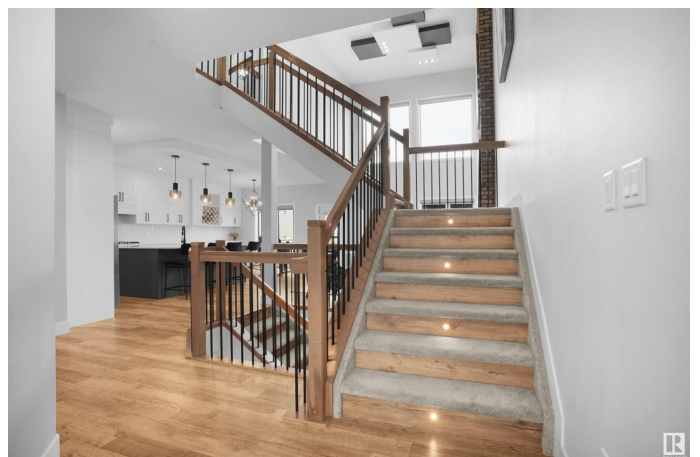
5 Bedroom, 3.50 Bathroom, 2,417 sqft

Single Family on 0.00 Acres

Meadowview Park\_LEDU, Leduc, AB

WOW! Stunning 2-storey w/FULLY FINISHED bsmt providing an extra 800+ SQ FT in CUL-DE-SAC location! 4 BEDROOMS, 3.5 BATHS & DBL ATTACHED GARAGE! FULLY UPGRADED! Enjoy SOARING 18' CEILINGS in the living room with views of the DOUBLE DECK & spacious backyard. CHEF-INSPIRED KITCHEN w/ WALK-THROUGH PANTRY, LARGE ISLAND, QUARTZ COUNTERS & STAINLESS APPLIANCES. Convenient MAIN FLOOR BDRM/DEN/OFFICE + BONUS ROOM UPSTAIRS. LUXURIOUS PRIMARY with 5-PC ENSUITE & UPSTAIRS LAUNDRY. Let's talk about the UPGRADES! Bsmnt offers 9' CEILINGS, ROCKWOOL SOUNDPROOFING, HARDLINE INTERNET to 3 ROOMS & TV MOUNT ELECTRICAL. Relax by the STONE FIREPLACE with 72" ELECTRIC INSERT & MULTIMEDIA WIRING. Includes STONE FEATURE WALL, WINE RACK, WET BAR ROUGH-IN, 220V for HOT TUB/A/C, UTILITY SINK & 2ND LAUNDRY HOOKUP. Spa-like BATH w HEATED FLOORS & TOWEL RACK & CUSTOM SHOWER with RIOBEL DUAL SYSTEM. Outside: ZEROSCAPE LANDSCAPING, FLAGSTONE PATIO & NATURAL GAS LINES on DECK & GARAGE. Close to schools, shopping & more!

Built in 2020



## Essential Information

|                |                        |
|----------------|------------------------|
| MLS® #         | E4444518               |
| Price          | \$699,900              |
| Bedrooms       | 5                      |
| Bathrooms      | 3.50                   |
| Full Baths     | 3                      |
| Half Baths     | 1                      |
| Square Footage | 2,417                  |
| Acres          | 0.00                   |
| Year Built     | 2020                   |
| Type           | Single Family          |
| Sub-Type       | Detached Single Family |
| Style          | 2 Storey               |
| Status         | Active                 |

## Community Information

|             |                      |
|-------------|----------------------|
| Address     | 12 Caledonia Court   |
| Area        | Leduc                |
| Subdivision | Meadowview Park_LEDU |
| City        | Leduc                |
| County      | ALBERTA              |
| Province    | AB                   |
| Postal Code | T9E 0S9              |

## Amenities

|                |                                                                  |
|----------------|------------------------------------------------------------------|
| Amenities      | Ceiling 9 ft., Detectors Smoke, Hot Water Instant, Vinyl Windows |
| Parking Spaces | 4                                                                |
| Parking        | Double Garage Attached                                           |

## Interior

|                   |                                                                                                                              |
|-------------------|------------------------------------------------------------------------------------------------------------------------------|
| Interior Features | ensuite bathroom                                                                                                             |
| Appliances        | Dishwasher-Built-In, Garage Control, Garage Opener, Oven-Built-In, Oven-Microwave, Refrigerator, Stove-Gas, Window Coverings |
| Heating           | Forced Air-1, Natural Gas                                                                                                    |
| Stories           | 3                                                                                                                            |
| Has Basement      | Yes                                                                                                                          |
| Basement          | Full, Finished                                                                                                               |

## Exterior

|                   |                                                                 |
|-------------------|-----------------------------------------------------------------|
| Exterior          | Wood, Stone, Vinyl                                              |
| Exterior Features | Airport Nearby, Public Transportation, Schools, Shopping Nearby |
| Roof              | Asphalt Shingles                                                |
| Construction      | Wood, Stone, Vinyl                                              |
| Foundation        | Concrete Perimeter                                              |

**Additional Information**

|                |                 |
|----------------|-----------------|
| Date Listed    | June 26th, 2025 |
| Days on Market | 34              |
| Zoning         | Zone 81         |

DATA IS DEEMED RELIABLE BUT IS NOT GUARANTEED ACCURATE BY THE REALTORS® ASSOCIATION OF EDMONTON. COPYRIGHT 2025 BY THE REALTORS® ASSOCIATION OF EDMONTON. ALL RIGHTS RESERVED.Trademarks are owned or controlled by the Canadian Real Estate Association (CREA) and identify real estate professionals who are members of CREA (REALTOR®, REALTORS®) and/or the quality of services they provide (MLS®, Multiple Listing Service®)

Listing information last updated on July 30th, 2025 at 3:47pm MDT