

## \$289,000 - 103 102 West Haven Drive, Leduc

MLS® #E4446915

**\$289,000**

4 Bedroom, 2.50 Bathroom, 1,340 sqft  
Condo / Townhouse on 0.00 Acres

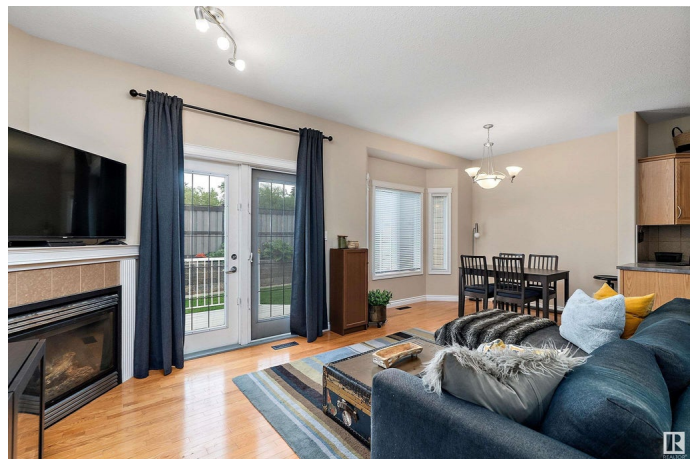
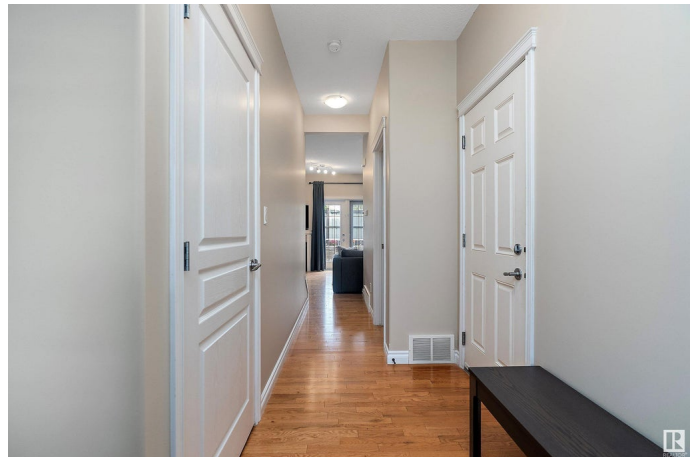
West Haven, Leduc, AB

Immaculate 4 bedroom townhouse with a attached single garage. Front veranda to have morning coffee, inside there is an open floor place with living room with gas fireplace and garden door out to your east facing back deck. Spacious kitchen with lot of cabinets, 2 pantries, all appliances. There is a 2 piece powder room on the main floor and hardwood floors. Upstairs features a large landing and 3 bedrooms, 4 piece main bathroom. The primary suite has a walk in closet and private ensuite bathroom. The FULLY FINISHED basement has a family room space, 4th bedroom, storage room, laundry. Situated in a quiet gated community.

Built in 2007

### Essential Information

MLS® #	E4446915
Price	\$289,000
Bedrooms	4
Bathrooms	2.50
Full Baths	2
Half Baths	1
Square Footage	1,340
Acres	0.00
Year Built	2007
Type	Condo / Townhouse



Sub-Type	Townhouse
Style	2 Storey
Status	Active

### Community Information

Address	103 102 West Haven Drive
Area	Leduc
Subdivision	West Haven
City	Leduc
County	ALBERTA
Province	AB
Postal Code	T9E 0A2

### Amenities

Amenities	See Remarks
Parking	Single Garage Attached

### Interior

Interior Features	ensuite bathroom
Appliances	Dishwasher-Built-In, Dryer, Garage Control, Garage Opener, Refrigerator, Stove-Electric, Washer, Window Coverings
Heating	Forced Air-1, Natural Gas
Fireplace	Yes
Fireplaces	Corner
Stories	3
Has Basement	Yes
Basement	Full, Finished

### Exterior

Exterior	Wood, Stone, Vinyl
Exterior Features	See Remarks
Roof	Asphalt Shingles
Construction	Wood, Stone, Vinyl
Foundation	Concrete Perimeter

### Additional Information

Date Listed	July 10th, 2025
Days on Market	1
Zoning	Zone 81

Condo Fee                \$318

DATA IS DEEMED RELIABLE BUT IS NOT GUARANTEED ACCURATE BY THE REALTORS® ASSOCIATION OF EDMONTON. COPYRIGHT 2025 BY THE REALTORS® ASSOCIATION OF EDMONTON. ALL RIGHTS RESERVED.Trademarks are owned or controlled by the Canadian Real Estate Association (CREA) and identify real estate professionals who are members of CREA (REALTOR®, REALTORS®) and/or the quality of services they provide (MLS®, Multiple Listing Service®)

Listing information last updated on July 11th, 2025 at 11:17am MDT