

## \$137,000 - 219 2323 119 Street, Edmonton

MLS® #E4446922

**\$137,000**

2 Bedroom, 1.00 Bathroom, 839 sqft

Condo / Townhouse on 0.00 Acres

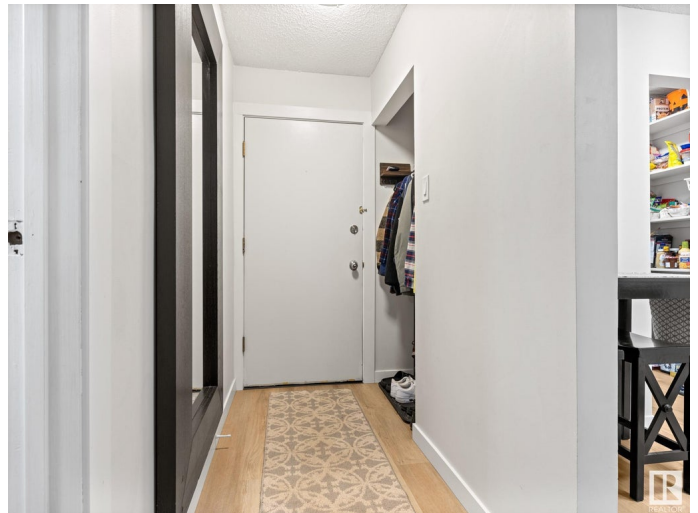
Blue Quill, Edmonton, AB

~ CUTE 2 BEDROOM, 1 BATH CONDO ~  
LOCATED in the AMAZING COMMUNITY of  
BLUE QUILL ~ SECOND FLOOR UNIT ~  
Check out this amazing 2 bedroom unit in  
FEATHERSTONE VILLAGE ~ IN-SUITE SIDE  
BY SIDE WASHER & DRYER ~ Newer paint  
and flooring ~ LARGE BALCONY with  
STORAGE ROOM ~ PARKING STALL close  
to building with a plug in for your vehicle ~  
Very well kept unit that is in move in ready  
condition ~ Located close to Whitemud Drive,  
Anthony Henday, Shopping and Public  
Transportation ~ Perfect for students, retirees  
or couples ~ Hurry before this one is gone !!!

Built in 1977

### Essential Information

MLS® #	E4446922
Price	\$137,000
Bedrooms	2
Bathrooms	1.00
Full Baths	1
Square Footage	839
Acres	0.00
Year Built	1977
Type	Condo / Townhouse
Sub-Type	Lowrise Apartment
Style	Single Level Apartment



Status Active

### Community Information

Address 219 2323 119 Street  
Area Edmonton  
Subdivision Blue Quill  
City Edmonton  
County ALBERTA  
Province AB  
Postal Code T6J 4E2

### Amenities

Amenities Detectors Smoke, Intercom, No Smoking Home, Parking-Plug-Ins, Parking-Visitor, Security Door, Television Connection  
Parking Stall

### Interior

Appliances Dishwasher-Built-In, Dryer, Refrigerator, Stove-Electric, Washer, Window Coverings  
Heating Baseboard, Natural Gas  
# of Stories 3  
Stories 1  
Has Basement Yes  
Basement None, No Basement

### Exterior

Exterior Wood  
Exterior Features Airport Nearby, Corner Lot, Flat Site, Golf Nearby, Landscaped, No Back Lane, No Through Road, Not Fenced, Playground Nearby, Public Swimming Pool, Public Transportation, Schools, Shopping Nearby  
Roof Asphalt Shingles  
Construction Wood  
Foundation Concrete Perimeter

### Additional Information

Date Listed July 10th, 2025  
Days on Market 3  
Zoning Zone 16  
Condo Fee \$566

DATA IS DEEMED RELIABLE BUT IS NOT GUARANTEED ACCURATE BY THE REALTORS® ASSOCIATION OF

EDMONTON. COPYRIGHT 2025 BY THE REALTORS® ASSOCIATION OF EDMONTON. ALL RIGHTS RESERVED.Trademarks are owned or controlled by the Canadian Real Estate Association (CREA) and identify real estate professionals who are members of CREA (REALTOR®, REALTORS®) and/or the quality of services they provide (MLS®, Multiple Listing Service®)

Listing information last updated on July 13th, 2025 at 8:17pm MDT