

\$259,000 - 401 111 Ambleside Drive, Edmonton

MLS® #E4446943

\$259,000

3 Bedroom, 2.00 Bathroom, 1,057 sqft
Condo / Townhouse on 0.00 Acres

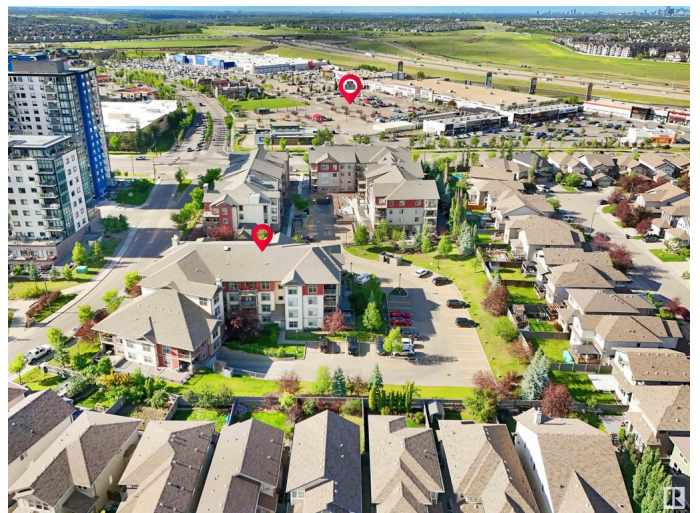
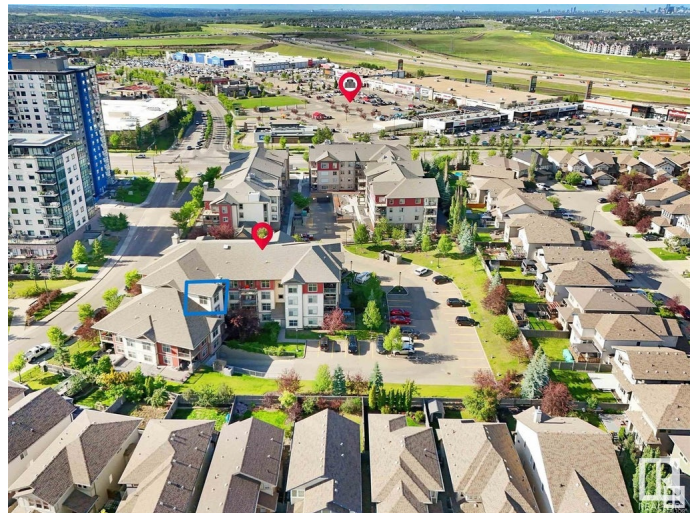
Ambleside, Edmonton, AB

Located in the sought-after Ambleside neighborhood, this well-kept top-floor corner unit offers privacy and convenience just steps away from Windermere Currents Plaza, with easy access to shopping, schools, and all essential amenities. This spacious unit features 3 bedrooms, 2 full bathrooms with 9 foot ceilings and the convenience of in-suite laundry. Unwind or entertain in peace on your private balcony. Enjoy cooking in the modern kitchen with sleek stainless steel appliances. The layout is both functional and bright, with large windows enhancing the open feel. This unit includes two parking stalls—one titled heated underground parking which also includes heated ramp for extra convenience and one surface stall—making it perfect for families or professionals seeking comfort and accessibility in a prime location.

Built in 2011

Essential Information

MLS® #	E4446943
Price	\$259,000
Bedrooms	3
Bathrooms	2.00
Full Baths	2
Square Footage	1,057
Acres	0.00



Year Built	2011
Type	Condo / Townhouse
Sub-Type	Lowrise Apartment
Style	Single Level Apartment
Status	Active

Community Information

Address	401 111 Ambleside Drive
Area	Edmonton
Subdivision	Ambleside
City	Edmonton
County	ALBERTA
Province	AB
Postal Code	T6W 0J4

Amenities

Amenities	Ceiling 9 ft., No Smoking Home, Parking-Visitor
Parking Spaces	2
Parking	Heated, Single Indoor, Stall, Underground

Interior

Interior Features	ensuite bathroom
Appliances	Dishwasher-Built-In, Microwave Hood Fan, Refrigerator, Stacked Washer/Dryer, Stove-Induction
Heating	Hot Water, Natural Gas
# of Stories	4
Stories	1
Has Basement	Yes
Basement	None, No Basement

Exterior

Exterior	Wood, Vinyl
Exterior Features	Airport Nearby, Playground Nearby, Public Transportation, Schools, Shopping Nearby
Roof	Asphalt Shingles
Construction	Wood, Vinyl
Foundation	Concrete Perimeter

Additional Information

Date Listed	July 10th, 2025
Days on Market	20
Zoning	Zone 56
Condo Fee	\$623

DATA IS DEEMED RELIABLE BUT IS NOT GUARANTEED ACCURATE BY THE REALTORS® ASSOCIATION OF EDMONTON. COPYRIGHT 2025 BY THE REALTORS® ASSOCIATION OF EDMONTON. ALL RIGHTS RESERVED. Trademarks are owned or controlled by the Canadian Real Estate Association (CREA) and identify real estate professionals who are members of CREA (REALTOR®, REALTORS®) and/or the quality of services they provide (MLS®, Multiple Listing Service®)

Listing information last updated on July 30th, 2025 at 12:47am MDT