

## \$315,000 - 13891 114 Street, Edmonton

MLS® #E4447681

**\$315,000**

4 Bedroom, 2.00 Bathroom, 1,112 sqft

Condo / Townhouse on 0.00 Acres

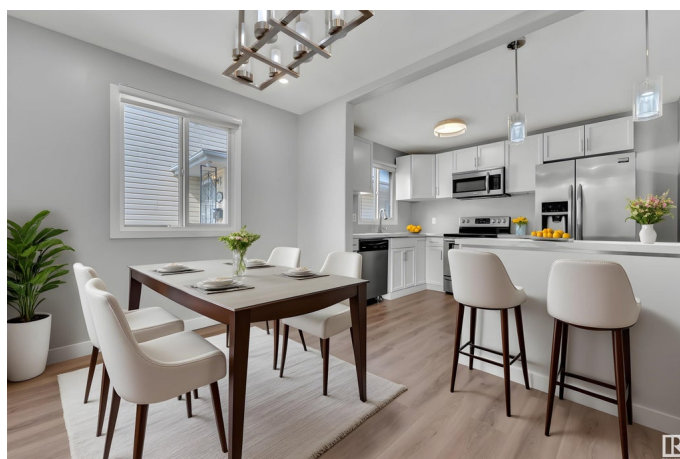
Carlisle, Edmonton, AB

Spacious 1100 sqft half duplex-style 4 bed + den condo with separate basement entrance and 2nd kitchenette featuring built-in Monogram range hood. Main floor offers 3 bedrooms, bright living room with feature wall, new open-concept kitchen with top-tier appliances, and 4-pc bathroom. Basement has 4th bedroom, den, 3-pc bathroom, and open living/dining area with kitchenette—ideal for extended family. Fully renovated: luxury vinyl plank flooring, new paint, lighting, appliances, updated kitchen/baths with ceramic tile, new blinds, vinyl windows. Private fenced yard—great for kids, garden, and BBQs. Onsite parking for 2. Quiet crescent with no thru traffic. Well-managed complex with low condo fees. Close to schools, shopping, parks, transit. Quick possession available!

Built in 1979

### Essential Information

MLS® #	E4447681
Price	\$315,000
Bedrooms	4
Bathrooms	2.00
Full Baths	2
Square Footage	1,112
Acres	0.00
Year Built	1979



Type	Condo / Townhouse
Sub-Type	Half Duplex
Style	Bungalow
Status	Active

### Community Information

Address	13891 114 Street
Area	Edmonton
Subdivision	Carlisle
City	Edmonton
County	ALBERTA
Province	AB
Postal Code	T5X 4A1

### Amenities

Amenities	Bar, Carbon Monoxide Detectors, Detectors Smoke, No Animal Home, No Smoking Home, Smart/Program. Thermostat, Recreation Room/Centre, Vinyl Windows
Parking	2 Outdoor Stalls

### Interior

Appliances	Dishwasher-Built-In, Dryer, Hood Fan, Microwave Hood Fan, Refrigerator, Storage Shed, Stove-Electric, Washer, Stove-Countertop Inductn
Heating	Forced Air-1, Natural Gas
Stories	2
Has Basement	Yes
Basement	Full, Finished

### Exterior

Exterior	Wood, Stucco
Exterior Features	Golf Nearby, Landscaped, Low Maintenance Landscape, No Back Lane, Paved Lane, Playground Nearby, Public Transportation, Schools, Shopping Nearby, Ski Hill Nearby
Roof	Asphalt Shingles
Construction	Wood, Stucco
Foundation	Concrete Perimeter

### School Information

Elementary	Caernarvon, St.Timothy Cat
------------	----------------------------

Middle	Islamic, MBS, Calder Schoo
High	Queen E, O'Leary, M.E Laz

**Additional Information**

Date Listed	July 14th, 2025
Days on Market	1
Zoning	Zone 27
Condo Fee	\$300

DATA IS DEEMED RELIABLE BUT IS NOT GUARANTEED ACCURATE BY THE REALTORS® ASSOCIATION OF EDMONTON. COPYRIGHT 2025 BY THE REALTORS® ASSOCIATION OF EDMONTON. ALL RIGHTS RESERVED.Trademarks are owned or controlled by the Canadian Real Estate Association (CREA) and identify real estate professionals who are members of CREA (REALTOR®, REALTORS®) and/or the quality of services they provide (MLS®, Multiple Listing Service®)

Listing information last updated on July 15th, 2025 at 6:02am MDT