

\$599,000 - 35 Appleton Crescent, Sherwood Park

MLS® #E4448217

\$599,000

4 Bedroom, 3.00 Bathroom, 1,539 sqft

Single Family on 0.00 Acres

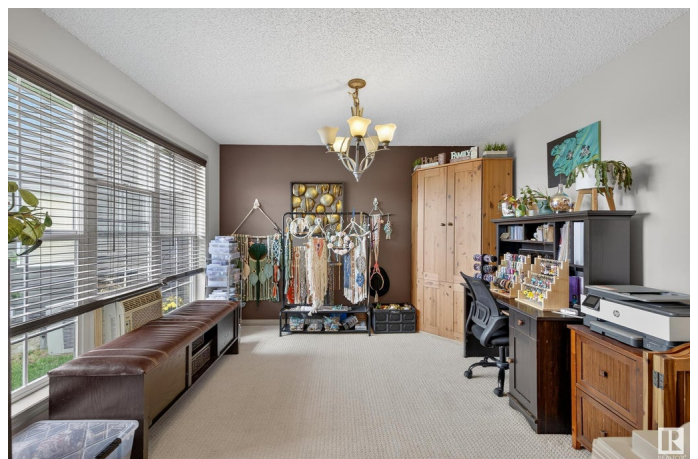
Aspen Trails, Sherwood Park, AB

Spacious and stylish, this beautifully designed bungalow offers 4 bedrooms—2 up and 2 down—and 3 full bathrooms, perfect for growing families or multi-generational living. The open-concept main floor features a cozy fireplace in the living/family room, a dedicated dining area, and convenient main floor laundry. The primary suite is a true retreat with a luxurious ensuite boasting a jetted tub and an oversized separate shower. Crown mouldings and a neutral palette add a timeless touch throughout. Enjoy the partially covered deck just off the kitchen—ideal for morning coffee or evening BBQs. Added bonuses include a built-in vacuum system, alarm system, and a developer-completed landscaping package. Lower-level carpet and fixtures are currently being completed. Located close to major shopping amenities and with quick access to the Anthony Henday for easy commuting.

Built in 2006

Essential Information

MLS® #	E4448217
Price	\$599,000
Bedrooms	4
Bathrooms	3.00
Full Baths	3



Square Footage	1,539
Acres	0.00
Year Built	2006
Type	Single Family
Sub-Type	Detached Single Family
Style	Bungalow
Status	Active

Community Information

Address	35 Appleton Crescent
Area	Sherwood Park
Subdivision	Aspen Trails
City	Sherwood Park
County	ALBERTA
Province	AB
Postal Code	T8H 0A4

Amenities

Amenities	Deck
Parking	Double Garage Attached

Interior

Interior Features	ensuite bathroom
Appliances	Dishwasher-Built-In, Dryer, Hood Fan, Oven-Microwave, Refrigerator, Stove-Electric, Vacuum Systems, Washer, Window Coverings
Heating	Forced Air-1, Natural Gas
Fireplace	Yes
Fireplaces	Direct Vent
Stories	2
Has Basement	Yes
Basement	Full, Finished

Exterior

Exterior	Wood, Vinyl
Exterior Features	Cul-De-Sac, No Back Lane
Roof	Asphalt Shingles
Construction	Wood, Vinyl
Foundation	Concrete Perimeter

Additional Information

Date Listed July 17th, 2025

Days on Market 12

Zoning Zone 25

DATA IS DEEMED RELIABLE BUT IS NOT GUARANTEED ACCURATE BY THE REALTORS® ASSOCIATION OF EDMONTON. COPYRIGHT 2025 BY THE REALTORS® ASSOCIATION OF EDMONTON. ALL RIGHTS RESERVED. Trademarks are owned or controlled by the Canadian Real Estate Association (CREA) and identify real estate professionals who are members of CREA (REALTOR®, REALTORS®) and/or the quality of services they provide (MLS®, Multiple Listing Service®)

Listing information last updated on July 28th, 2025 at 11:02pm MDT