

## **\$679,900 - 7 Chelsea Way, Sherwood Park**

MLS® #E4448593

### **\$679,900**

3 Bedroom, 2.00 Bathroom, 1,606 sqft

Single Family on 0.00 Acres

Lakeland Ridge, Sherwood Park, AB

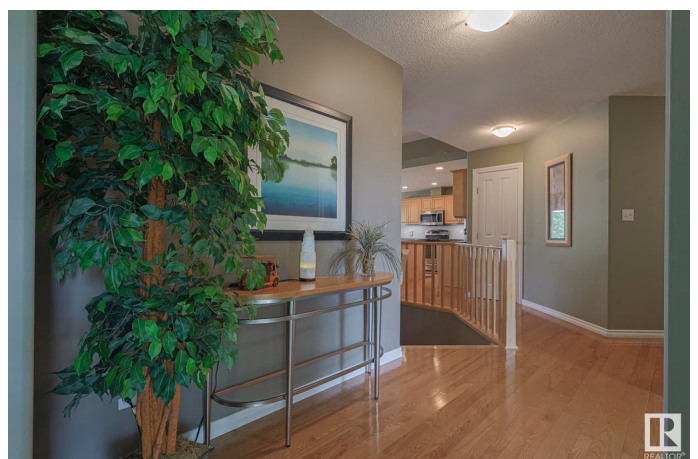
Original owner, pride of ownership is evident in this elegant & upgraded bungalow. 1605 sqft/149.18 m<sup>2</sup>, energy efficient, ICF construction (insulated concrete form). Main floor features include a great room with a two-sided gas fireplace (separating the living room & primary bedroom) adjacent to an island kitchen with an eating bar, sunny dining room, upgraded Corian countertops & maple cabinetry. Flex room can be used as bedroom #3, den, formal dining, library or family room. Primary bedroom features a fireplace, 4 piece ensuite & walk in closet. Bedroom #2 is conveniently located across the hall from the main bathroom. Main floor laundry/mud room with sink. Oak hardwood flooring throughout, luxury vinyl tile in bathrooms, flex room & bedrooms. In floor heating in basement & 22'x22' garage. West facing back yard, maintenance free deck with gazebo, immaculately landscaped, underground sprinkling, fully fenced. Painstakingly maintained, newer shingles, upgraded high e furnace, central a/c, move in ready.

Built in 2001

### **Essential Information**

MLS® # E4448593

Price \$679,900



Bedrooms	3
Bathrooms	2.00
Full Baths	2
Square Footage	1,606
Acres	0.00
Year Built	2001
Type	Single Family
Sub-Type	Detached Single Family
Style	Bungalow
Status	Active

### **Community Information**

Address	7 Chelsea Way
Area	Sherwood Park
Subdivision	Lakeland Ridge
City	Sherwood Park
County	ALBERTA
Province	AB
Postal Code	T8H 2G6

### **Amenities**

Amenities	Air Conditioner, Deck, 9 ft. Basement Ceiling
Parking Spaces	4
Parking	Double Garage Attached, Heated, Insulated

### **Interior**

Interior Features	ensuite bathroom
Appliances	Air Conditioning-Central, Dishwasher-Built-In, Dryer, Garage Control, Garage Opener, Microwave Hood Fan, Refrigerator, Stove-Electric, Washer, Window Coverings
Heating	Forced Air-1, Heat Pump, Natural Gas
Fireplace	Yes
Fireplaces	Double Sided
Stories	1
Has Basement	Yes
Basement	Full, Unfinished

### **Exterior**

Exterior	ICFs (Insulated Concrete Forms), Brick, Vinyl
----------	---

Exterior Features	Fenced, Flat Site, Landscaped, No Back Lane, Playground Nearby, Public Swimming Pool, Public Transportation, Schools, Shopping Nearby
Roof	Asphalt Shingles
Construction	ICFs (Insulated Concrete Forms), Brick, Vinyl
Foundation	Concrete Perimeter

### School Information

Elementary	Lakeland Ridge/Trillium
Middle	Lakeland Ridge/Trillium
High	Bev Facey

### Additional Information

Date Listed	July 18th, 2025
Days on Market	12
Zoning	Zone 25

DATA IS DEEMED RELIABLE BUT IS NOT GUARANTEED ACCURATE BY THE REALTORS® ASSOCIATION OF EDMONTON. COPYRIGHT 2025 BY THE REALTORS® ASSOCIATION OF EDMONTON. ALL RIGHTS RESERVED. Trademarks are owned or controlled by the Canadian Real Estate Association (CREA) and identify real estate professionals who are members of CREA (REALTOR®, REALTORS®) and/or the quality of services they provide (MLS®, Multiple Listing Service®)

Listing information last updated on July 29th, 2025 at 9:31pm MDT