

\$390,000 - 2921 19 Avenue, Edmonton

MLS® #E4449264

\$390,000

3 Bedroom, 2.50 Bathroom, 1,275 sqft

Single Family on 0.00 Acres

Laurel, Edmonton, AB

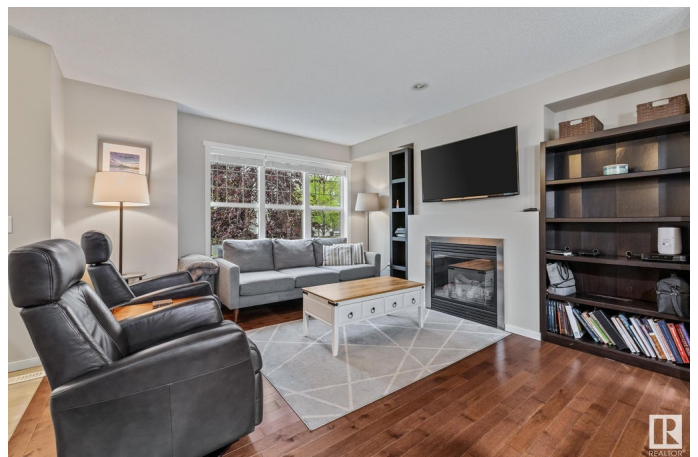
Move-in ready and full of value this 2-storey half duplex in Laurel blends modern finishes with everyday functionality. With 3 bedrooms and 2.5 bathrooms this home is perfect for families, first-time buyers or investors. The open-concept main floor features rich hardwood floors, a cozy fireplace. A stylish kitchen with espresso cabinets, mosaic tile backsplash and an eat-up island ideal for casual dining & entertaining. A rear mudroom adds convenience and storage. Upstairs the primary bedroom includes a walk-in closet, private 4-piece ensuite. Two additional bedrooms & a full bath complete the upper level. The unfinished basement includes laundry, a flex space and bathroom rough-ins offering room to grow or personalize. Enjoy the sunny fenced yard with a deck and a double detached garage with alley access. Recent updates include a newer furnace, hot water tank and sump pump & wired internet in every room. Located close to schools, parks, transit & the Henday this home delivers comfort and long-term value.

Built in 2011

Essential Information

MLS® # E4449264

Price \$390,000



Bedrooms	3
Bathrooms	2.50
Full Baths	2
Half Baths	1
Square Footage	1,275
Acres	0.00
Year Built	2011
Type	Single Family
Sub-Type	Half Duplex
Style	2 Storey
Status	Active

Community Information

Address	2921 19 Avenue
Area	Edmonton
Subdivision	Laurel
City	Edmonton
County	ALBERTA
Province	AB
Postal Code	T6T 0N6

Amenities

Amenities	Deck, Detectors Smoke, No Smoking Home, Smart/Program. Thermostat, HRV System, Natural Gas BBQ Hookup
Parking Spaces	2
Parking	Double Garage Detached

Interior

Interior Features	ensuite bathroom
Appliances	Dishwasher-Built-In, Dryer, Garage Control, Garage Opener, Microwave Hood Fan, Refrigerator, Stove-Electric, Washer, Window Coverings, TV Wall Mount
Heating	Forced Air-1, Natural Gas
Fireplace	Yes
Fireplaces	Glass Door
Stories	2
Has Basement	Yes
Basement	Full, Unfinished

Exterior

Exterior	Wood, Vinyl
Exterior Features	Back Lane, Fenced, Playground Nearby, Public Transportation, Schools, Shopping Nearby
Roof	Asphalt Shingles
Construction	Wood, Vinyl
Foundation	Concrete Perimeter

School Information

Elementary	Abbott School
Middle	A. Blair McPherson School
High	Academy at King Edward

Additional Information

Date Listed	July 23rd, 2025
Days on Market	6
Zoning	Zone 30

DATA IS DEEMED RELIABLE BUT IS NOT GUARANTEED ACCURATE BY THE REALTORS® ASSOCIATION OF EDMONTON. COPYRIGHT 2025 BY THE REALTORS® ASSOCIATION OF EDMONTON. ALL RIGHTS RESERVED. Trademarks are owned or controlled by the Canadian Real Estate Association (CREA) and identify real estate professionals who are members of CREA (REALTOR®, REALTORS®) and/or the quality of services they provide (MLS®, Multiple Listing Service®)

Listing information last updated on July 28th, 2025 at 11:47pm MDT