

\$150,000 - 105 11445 Ellerslie Road, Edmonton

MLS® #E4449653

\$150,000

1 Bedroom, 1.00 Bathroom, 570 sqft

Condo / Townhouse on 0.00 Acres

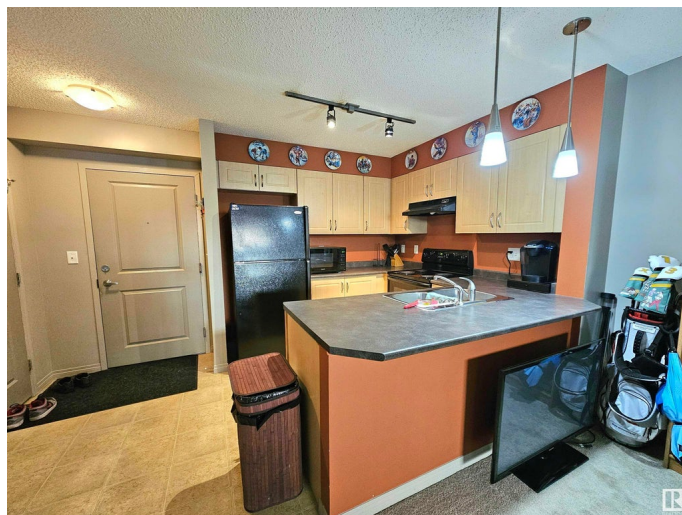
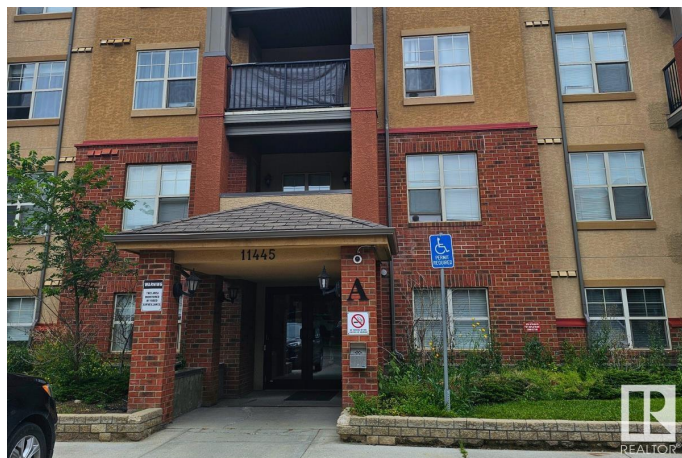
Rutherford (Edmonton), Edmonton, AB

Welcome to Rutherford Village! This well-maintained ground floor unit is the perfect opportunity for first-time buyers or savvy investors. Enjoy a bright east-facing walkout patio, open-concept layout with a spacious living room, and a kitchen featuring a large breakfast bar. The generous bedroom offers a walk-through closet and direct access to the full bath. Additional highlights include new 2024 washer/dryer, in-suite laundry, extra storage, and underground heated parking. Monthly condo fees include heat, water, and power! Located within walking distance to schools, parks, trails, shopping, and the new Capital Line Park & Ride with direct service to Century Park. You're also minutes from the Anthony Henday, placing Downtown, Whyte Ave, U of A, and major shopping centres all within easy reach. This condo blends lifestyle, comfort, and unbeatable convenience—ready for you to move in or add to your portfolio!

Built in 2005

Essential Information

MLS® #	E4449653
Price	\$150,000
Bedrooms	1
Bathrooms	1.00
Full Baths	1



Square Footage	570
Acres	0.00
Year Built	2005
Type	Condo / Townhouse
Sub-Type	Lowrise Apartment
Style	Single Level Apartment
Status	Active

Community Information

Address	105 11445 Ellerslie Road
Area	Edmonton
Subdivision	Rutherford (Edmonton)
City	Edmonton
County	ALBERTA
Province	AB
Postal Code	T6W 1T1

Amenities

Amenities	Closet Organizers, Sprinkler System-Fire, Storage-Locker Room, Vinyl Windows
Parking	Underground

Interior

Appliances	Dishwasher-Built-In, Dryer, Refrigerator, Stove-Electric, Washer, Window Coverings
Heating	Hot Water, Natural Gas
# of Stories	4
Stories	1
Has Basement	Yes
Basement	None, No Basement

Exterior

Exterior	Wood, Brick, Stucco, Vinyl
Exterior Features	Public Transportation, Schools, Shopping Nearby, Partially Fenced
Roof	Asphalt Shingles
Construction	Wood, Brick, Stucco, Vinyl
Foundation	Concrete Perimeter

Additional Information

Date Listed	July 25th, 2025
Days on Market	1
Zoning	Zone 55
Condo Fee	\$525

DATA IS DEEMED RELIABLE BUT IS NOT GUARANTEED ACCURATE BY THE REALTORS® ASSOCIATION OF EDMONTON. COPYRIGHT 2025 BY THE REALTORS® ASSOCIATION OF EDMONTON. ALL RIGHTS RESERVED. Trademarks are owned or controlled by the Canadian Real Estate Association (CREA) and identify real estate professionals who are members of CREA (REALTOR®, REALTORS®) and/or the quality of services they provide (MLS®, Multiple Listing Service®)

Listing information last updated on July 26th, 2025 at 2:02pm MDT