

\$379,900 - 4429 5a Street, Edmonton

MLS® #E4451719

\$379,900

3 Bedroom, 2.50 Bathroom, 1,416 sqft

Single Family on 0.00 Acres

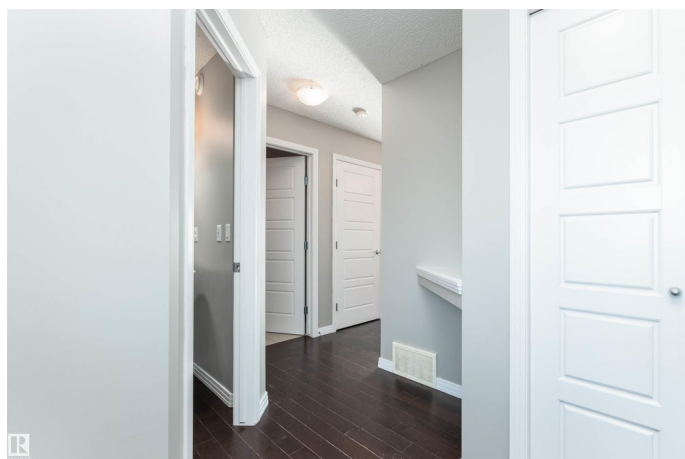
Maple Crest, Edmonton, AB

EXCEPTIONAL VALUE! Awesome location and ready for immediate possession! This 2 storey half duplex offers a great floor plan with 1300 square feet plus a partially finished basement. Spacious living room and a beautiful eat-in kitchen with Granite counter tops. Generous and open dining area. Powder room on main. Upstairs are 3 bedrooms and a 4 piece bathroom. The Primary Bedroom offers a 3 piece ensuite and a walk-in closet. The basement is partially done and ready for your finishing touches. Single attached garage. Nice backyard that is fully fenced and landscaped. Lovely deck as well. NO CONDO FEES to worry about! Close to parks, transit and great amenities. See it today! Visit REALTOR® website for more information.

Built in 2016

Essential Information

MLS® #	E4451719
Price	\$379,900
Bedrooms	3
Bathrooms	2.50
Full Baths	2
Half Baths	1
Square Footage	1,416
Acres	0.00



Year Built	2016
Type	Single Family
Sub-Type	Residential Attached
Style	2 Storey
Status	Active

Community Information

Address	4429 5a Street
Area	Edmonton
Subdivision	Maple Crest
City	Edmonton
County	ALBERTA
Province	AB
Postal Code	T6T 0Z8

Amenities

Amenities	Air Conditioner, See Remarks
Parking	Single Garage Attached

Interior

Interior Features	ensuite bathroom
Appliances	Air Conditioning-Central, Dryer, Refrigerator, Storage Shed, Stove-Electric, Washer, Window Coverings, See Remarks
Heating	Forced Air-1, Natural Gas
Fireplace	Yes
Fireplaces	Corner
Stories	2
Has Basement	Yes
Basement	Full, Partially Finished

Exterior

Exterior	Wood, Stone, Vinyl
Exterior Features	Fenced, Landscaped, Shopping Nearby
Roof	Asphalt Shingles
Construction	Wood, Stone, Vinyl
Foundation	Concrete Perimeter

Additional Information

Date Listed	August 7th, 2025
-------------	------------------

Days on Market 1

Zoning Zone 30

DATA IS DEEMED RELIABLE BUT IS NOT GUARANTEED ACCURATE BY THE REALTORS® ASSOCIATION OF EDMONTON. COPYRIGHT 2025 BY THE REALTORS® ASSOCIATION OF EDMONTON. ALL RIGHTS RESERVED. Trademarks are owned or controlled by the Canadian Real Estate Association (CREA) and identify real estate professionals who are members of CREA (REALTOR®, REALTORS®) and/or the quality of services they provide (MLS®, Multiple Listing Service®)

Listing information last updated on August 8th, 2025 at 11:17am MDT