

\$475,000 - 4108 108 Street, Edmonton

MLS® #E4451769

\$475,000

4 Bedroom, 2.50 Bathroom, 1,335 sqft
Single Family on 0.00 Acres

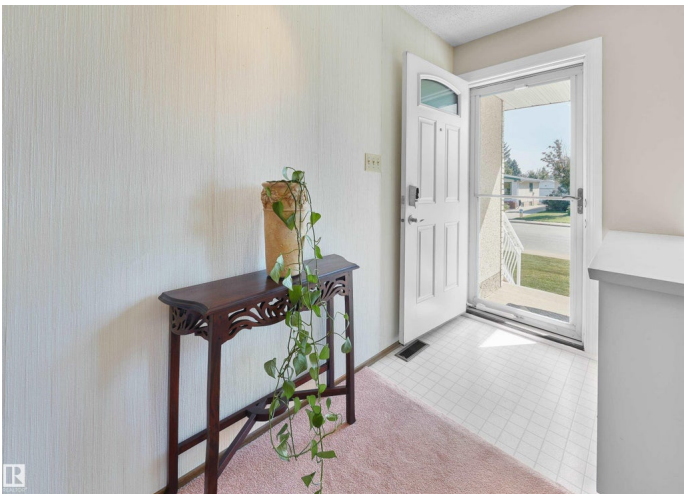
Rideau Park (Edmonton), Edmonton, AB

This 1,335 sq ft Ace Lange bungalow is perfectly located on a quiet street in one of south Edmonton’s most sought-after communities! Quality built and featuring 3 spacious bedrooms, a large eat-in kitchen, and 2 cozy fireplaces, air conditioning, this well-maintained home has loads of potential. Enjoy the benefit of numerous upgrades, including updated windows, shingles, furnace, hot water heater, and a beautifully renovated main bathroom. The generous primary bedroom includes a 2-piece ensuite, and the west-facing backyard is perfect for enjoying sunny afternoons. An oversized detached garage completes the package. Move-in ready with quick possession available – don’t miss your chance to own in Rideau Park!

Built in 1973

Essential Information

MLS® #	E4451769
Price	\$475,000
Bedrooms	4
Bathrooms	2.50
Full Baths	2
Half Baths	1
Square Footage	1,335
Acres	0.00



Year Built	1973
Type	Single Family
Sub-Type	Detached Single Family
Style	Bungalow
Status	Active

Community Information

Address	4108 108 Street
Area	Edmonton
Subdivision	Rideau Park (Edmonton)
City	Edmonton
County	ALBERTA
Province	AB
Postal Code	T6J 2R6

Amenities

Amenities	No Animal Home, No Smoking Home, Vinyl Windows
Parking Spaces	4
Parking	Double Garage Detached, Over Sized

Interior

Interior Features	ensuite bathroom
Appliances	Air Conditioning-Central, Dryer, Garage Opener, Refrigerator, Stove-Electric, Washer, Window Coverings
Heating	Forced Air-1, Natural Gas
Stories	2
Has Basement	Yes
Basement	Full, Finished

Exterior

Exterior	Wood, Brick, Stucco
Exterior Features	Fenced, Landscaped, Playground Nearby, Public Transportation, Schools, Shopping Nearby
Roof	Asphalt Shingles
Construction	Wood, Brick, Stucco
Foundation	Concrete Perimeter

Additional Information

Date Listed	August 6th, 2025
-------------	------------------

Days on Market 3

Zoning Zone 16

DATA IS DEEMED RELIABLE BUT IS NOT GUARANTEED ACCURATE BY THE REALTORS® ASSOCIATION OF EDMONTON. COPYRIGHT 2025 BY THE REALTORS® ASSOCIATION OF EDMONTON. ALL RIGHTS RESERVED. Trademarks are owned or controlled by the Canadian Real Estate Association (CREA) and identify real estate professionals who are members of CREA (REALTOR®, REALTORS®) and/or the quality of services they provide (MLS®, Multiple Listing Service®)

Listing information last updated on August 9th, 2025 at 7:32am MDT