

## \$500,000 - 633 Mcdonough Link, Edmonton

MLS® #E4451885

**\$500,000**

4 Bedroom, 3.50 Bathroom, 1,442 sqft

Single Family on 0.00 Acres

McConachie Area, Edmonton, AB

Step into warmth and comfort in this beautifully crafted two-storey gem in McConachie. From the moment you walk in, youâ€™ll feel right at home with its inviting, elegant interior and thoughtfully designed layout. The main floor boasts a cozy living room, a bright dining area with views of the spacious backyard, and a stylish kitchen featuring a centre island, double sinks, wood cabinetry, and generous counter space. A 2-piece bath adds convenience. Upstairs, plush carpeting leads you to the serene primary suite with a walk-in closet and 4-piece ensuite, along with two additional bedrooms and another full bathroom. The fully finished basement extends your living space with a large rec room, a fourth bedroom, a 3-piece bath, laundry, and storageâ€”ideal for guests, hobbies, or family time. Enjoy a huge backyard oasis and a detached double garage. Located close to schools, parks, and a nearby golf course, this home blends comfort, space, and convenience in one fantastic package.

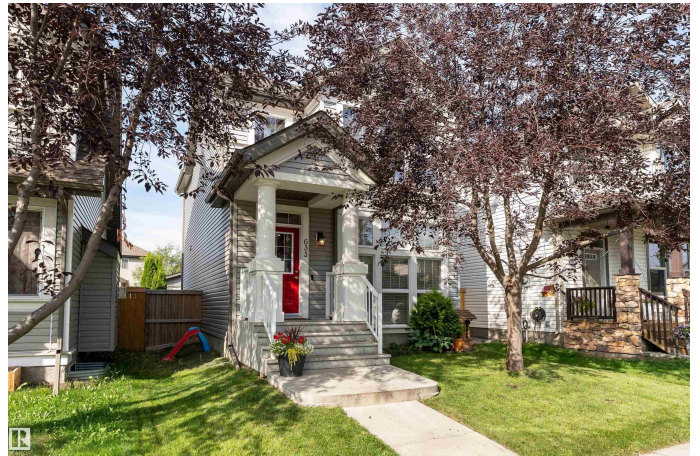
Built in 2011

### Essential Information

MLS® # E4451885

Price \$500,000

Bedrooms 4



Bathrooms	3.50
Full Baths	3
Half Baths	1
Square Footage	1,442
Acres	0.00
Year Built	2011
Type	Single Family
Sub-Type	Detached Single Family
Style	2 Storey
Status	Active

### Community Information

Address	633 Mcdonough Link
Area	Edmonton
Subdivision	McConachie Area
City	Edmonton
County	ALBERTA
Province	AB
Postal Code	T5Y 0K8

### Amenities

Amenities	On Street Parking, Air Conditioner, Patio, See Remarks
Parking	Double Garage Detached

### Interior

Interior Features	ensuite bathroom
Appliances	Air Conditioning-Central, Dishwasher-Built-In, Dryer, Microwave Hood Fan, Refrigerator, Stove-Electric, Washer, Window Coverings
Heating	Forced Air-1, Natural Gas
Fireplace	Yes
Fireplaces	Insert
Stories	2
Has Basement	Yes
Basement	Full, Finished

### Exterior

Exterior	Wood, Stone, Vinyl
Exterior Features	Back Lane, Golf Nearby, Public Transportation, Schools, Shopping Nearby

Roof	Asphalt Shingles
Construction	Wood, Stone, Vinyl
Foundation	Concrete Perimeter

### **School Information**

Elementary	Christ the King Catholic
Middle	Dr. Donald Massey School
High	M.E. LaZerte School

### **Additional Information**

Date Listed	August 8th, 2025
Days on Market	1
Zoning	Zone 03

DATA IS DEEMED RELIABLE BUT IS NOT GUARANTEED ACCURATE BY THE REALTORS® ASSOCIATION OF EDMONTON. COPYRIGHT 2025 BY THE REALTORS® ASSOCIATION OF EDMONTON. ALL RIGHTS RESERVED. Trademarks are owned or controlled by the Canadian Real Estate Association (CREA) and identify real estate professionals who are members of CREA (REALTOR®, REALTORS®) and/or the quality of services they provide (MLS®, Multiple Listing Service®)

Listing information last updated on August 9th, 2025 at 7:32am MDT