

\$459,000 - 7208 139 Avenue, Edmonton

MLS® #E4452053

\$459,000

4 Bedroom, 1.50 Bathroom, 1,160 sqft

Single Family on 0.00 Acres

Kildare, Edmonton, AB

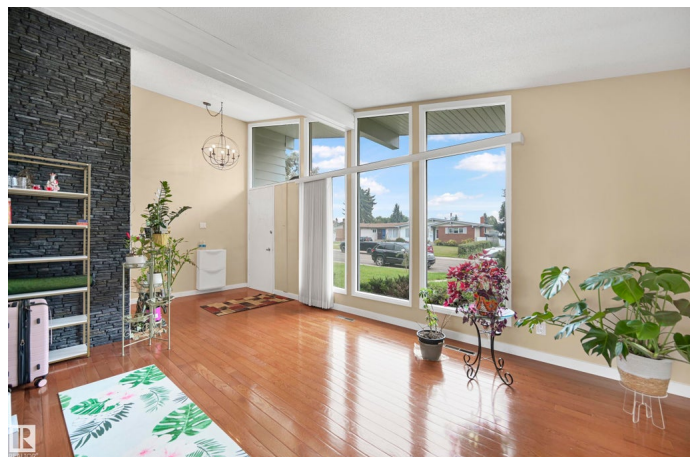
MID CENTURY BEAUTY! Straight out of the Homes and Gardens Magazine, you'll fall in love with his home immediately. As you enter the front foyer, you'll be impressed with a gorgeous, VAULTED CEILINGS, a FRONT WALL OF WINDOWS, and all the beautiful natural light that it brings in. The front room features a beautiful faux STONE WALL. The dining room has plenty of space to entertain the whole family, and the upgraded kitchen, features GRANITE COUNTERTOPS and STAINLESS STEEL APPLIANCES. All, with beautiful HARDWOOD FLOORS. Upstairs, a gorgeous primary bedroom has a plenty of room for a king bed, and features a two piece ensuite. Two more bedrooms and a four piece bath complete this level. The lower level boasts plenty of room for movie nights, as well as a den with good size windows. The basement is perfect size for a game room, and fourth bedroom. All this, plus an OVERSIZED double garage, newer HE FURNACE and CENTRAL AC, almost all NEW TRIPLE PANE WINDOWS, newer SHINGLES and central vacuum system.

Built in 1967

Essential Information

MLS® # E4452053

Price \$459,000



Bedrooms	4
Bathrooms	1.50
Full Baths	1
Half Baths	1
Square Footage	1,160
Acres	0.00
Year Built	1967
Type	Single Family
Sub-Type	Detached Single Family
Style	4 Level Split
Status	Active

Community Information

Address	7208 139 Avenue
Area	Edmonton
Subdivision	Kildare
City	Edmonton
County	ALBERTA
Province	AB
Postal Code	T5C 2M2

Amenities

Amenities	See Remarks
Parking	Double Garage Detached, Over Sized

Interior

Interior Features	ensuite bathroom
Appliances	Air Conditioning-Central, Dishwasher-Built-In, Dryer, Garage Control, Garage Opener, Garburator, Microwave Hood Fan, Refrigerator, Storage Shed, Stove-Electric, Vacuum System Attachments, Vacuum Systems, Washer, Window Coverings
Heating	Forced Air-1, Natural Gas
Stories	4
Has Basement	Yes
Basement	Full, Finished

Exterior

Exterior	Wood, Vinyl
Exterior Features	Fenced, Schools, Shopping Nearby

Roof	Asphalt Shingles
Construction	Wood, Vinyl
Foundation	Concrete Perimeter

Additional Information

Date Listed	August 7th, 2025
Days on Market	2
Zoning	Zone 02

DATA IS DEEMED RELIABLE BUT IS NOT GUARANTEED ACCURATE BY THE REALTORS® ASSOCIATION OF EDMONTON. COPYRIGHT 2025 BY THE REALTORS® ASSOCIATION OF EDMONTON. ALL RIGHTS RESERVED.Trademarks are owned or controlled by the Canadian Real Estate Association (CREA) and identify real estate professionals who are members of CREA (REALTOR®, REALTORS®) and/or the quality of services they provide (MLS®, Multiple Listing Service®)

Listing information last updated on August 9th, 2025 at 9:02pm MDT