

## \$159,000 - 4 8010 141 Avenue, Edmonton

MLS® #E4453354

**\$159,000**

3 Bedroom, 2.00 Bathroom, 926 sqft

Condo / Townhouse on 0.00 Acres

Kildare, Edmonton, AB

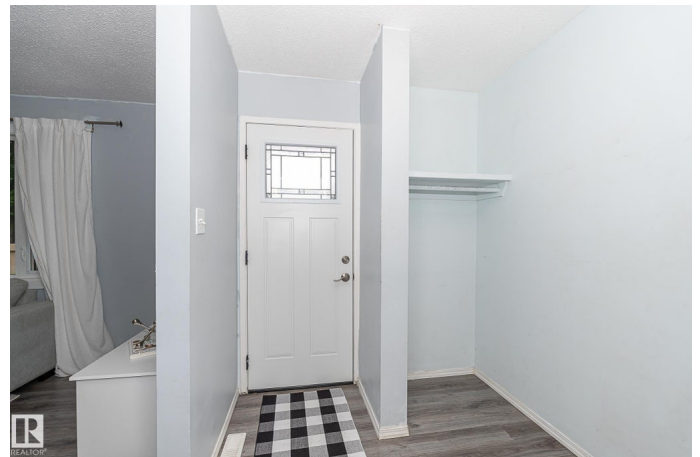
Welcome to this updated 3-bedroom, 2-bathroom townhouse in the well-managed complex of Norshire Gardens! Main floor features a large living room, dining room, NEW floors, and a beautiful NEW galley-style kitchen with plenty of cupboard space, subway-tiled backsplash and stainless steel appliances (2 years old). The upper floor features a spacious primary bedroom, two more good-size bedrooms and an upgraded 4-piece bathroom. The NEWLY RENOVATED basement (2 years ago) boasts vinyl planks, a gorgeous 3-piece bathroom with a big walk-in shower, a large Rec room, and a den. Newer furnace, HWT, washer & dryer, main door & storm door, light fixtures, and more. Beautiful south-facing yard with flower beds and plenty of room for your family BBQs and gatherings. Well maintained complex with newer windows and ongoing upgrades. Located on a quiet street with plenty of visitor parking. Walking distance to schools and major amenities. This is a great home for the starting family, with no shortage of space! Don't miss out!

Built in 1971

### Essential Information

MLS® # E4453354

Price \$159,000



Bedrooms	3
Bathrooms	2.00
Full Baths	2
Square Footage	926
Acres	0.00
Year Built	1971
Type	Condo / Townhouse
Sub-Type	Townhouse
Style	2 Storey
Status	Active

### Community Information

Address	4 8010 141 Avenue
Area	Edmonton
Subdivision	Kildare
City	Edmonton
County	ALBERTA
Province	AB
Postal Code	T5C 2N9

### Amenities

Amenities	On Street Parking, No Smoking Home, Parking-Plug-Ins, Vinyl Windows
Parking	Stall

### Interior

Appliances	Dishwasher-Built-In, Fan-Ceiling, Refrigerator, Stacked Washer/Dryer, Stove-Electric
Heating	Forced Air-1, Natural Gas
Stories	3
Has Basement	Yes
Basement	Full, Finished

### Exterior

Exterior	Wood, Stucco, Vinyl
Exterior Features	Fenced, Flat Site, Landscaped, Park/Reserve, Playground Nearby, Public Transportation, Schools, Shopping Nearby
Roof	Asphalt Shingles
Construction	Wood, Stucco, Vinyl
Foundation	Concrete Perimeter

**Additional Information**

Date Listed	August 16th, 2025
Days on Market	10
Zoning	Zone 02
Condo Fee	\$373

DATA IS DEEMED RELIABLE BUT IS NOT GUARANTEED ACCURATE BY THE REALTORS® ASSOCIATION OF EDMONTON. COPYRIGHT 2025 BY THE REALTORS® ASSOCIATION OF EDMONTON. ALL RIGHTS RESERVED.Trademarks are owned or controlled by the Canadian Real Estate Association (CREA) and identify real estate professionals who are members of CREA (REALTOR®, REALTORS®) and/or the quality of services they provide (MLS®, Multiple Listing Service®)

Listing information last updated on August 26th, 2025 at 7:17am MDT