

\$480,000 - 2917 21a Avenue, Edmonton

MLS® #E4453812

\$480,000

3 Bedroom, 3.50 Bathroom, 1,620 sqft

Single Family on 0.00 Acres

Laurel, Edmonton, AB

Don't miss out on this bright and sunny gem of a family home w/ three FULLY finished floors! Main floor has a spacious entry w/ an attached family room, 2pc bathroom. Massive kitchen with tons of counter space, large walk-in pantry. Great entertaining space w/ the dining area right besides the kitchen , and semi open concept into the living room for just the perfect amount of separation. Upstairs you'll find your large master retreat with a 4pc ensuite, large walk-in closet and bench seating w/ extra storage. Two more good sized bedrooms upstairs w/ the third one having a walk-in closet. Another 4pc bathroom to finish up the upstairs. Basement has a massive rec room w/ large windows and 9ft ceilings making the space inviting and warm. Bonus spa like bathroom w/ a jetted soaker tub, stand up steam shower. Laundry room & tons of storage in the basement. Back yard has been beautifully landscaped with pavers stone patio & walkway to your partially insulated dbl garage which is already wired for 220V!

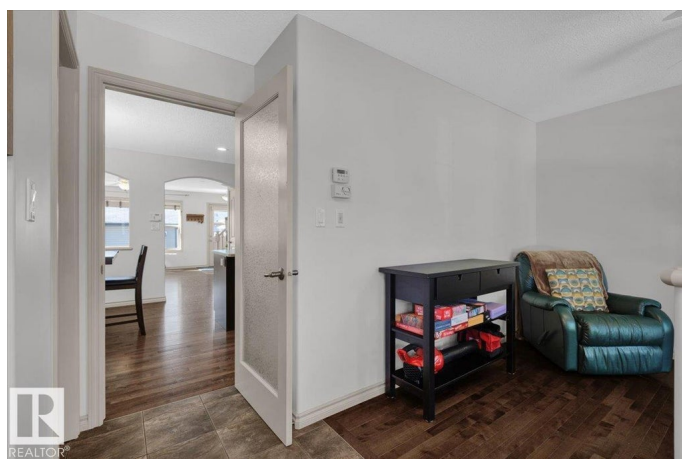
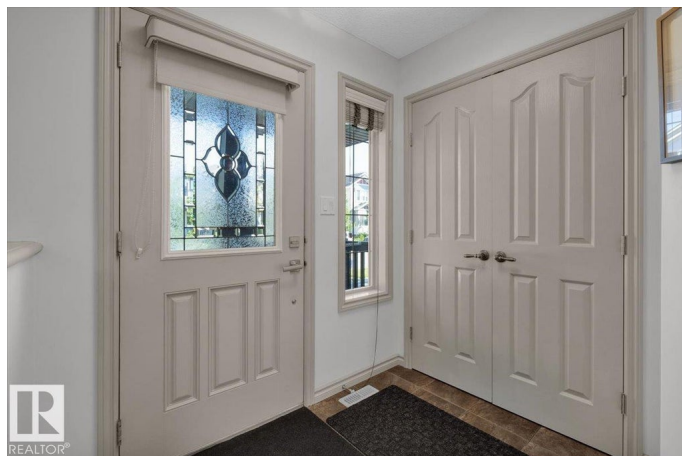
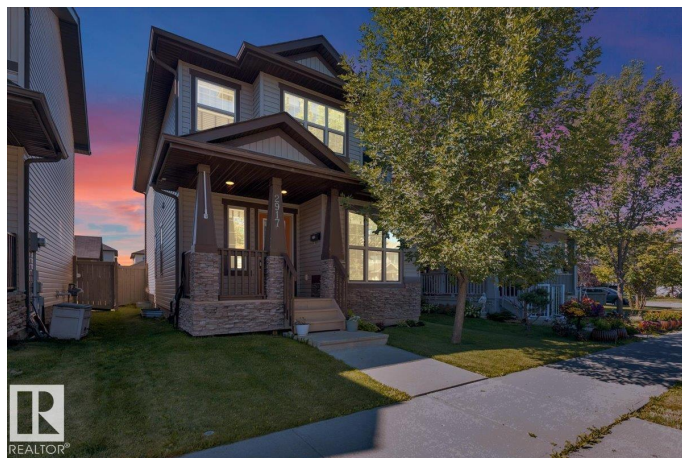
Built in 2010

Essential Information

MLS® # E4453812

Price \$480,000

Bedrooms 3



Bathrooms	3.50
Full Baths	3
Half Baths	1
Square Footage	1,620
Acres	0.00
Year Built	2010
Type	Single Family
Sub-Type	Detached Single Family
Style	2 Storey
Status	Active

Community Information

Address	2917 21a Avenue
Area	Edmonton
Subdivision	Laurel
City	Edmonton
County	ALBERTA
Province	AB
Postal Code	T6T 0K3

Amenities

Amenities	Off Street Parking, Carbon Monoxide Detectors, Deck, Front Porch, Hot Water Tankless, No Smoking Home, 9 ft. Basement Ceiling
Parking Spaces	4
Parking	Double Garage Detached

Interior

Interior Features	ensuite bathroom
Appliances	Dishwasher-Built-In, Dryer, Refrigerator, Stove-Electric, Washer
Heating	Forced Air-1, Natural Gas
Stories	3
Has Basement	Yes
Basement	Full, Finished

Exterior

Exterior	Wood, Stone, Vinyl
Exterior Features	Back Lane, Fenced, Landscaped, Playground Nearby, Shopping Nearby, See Remarks
Roof	Asphalt Shingles

Construction	Wood, Stone, Vinyl
Foundation	Concrete Perimeter

Additional Information

Date Listed	August 20th, 2025
Zoning	Zone 30

DATA IS DEEMED RELIABLE BUT IS NOT GUARANTEED ACCURATE BY THE REALTORS® ASSOCIATION OF EDMONTON. COPYRIGHT 2025 BY THE REALTORS® ASSOCIATION OF EDMONTON. ALL RIGHTS RESERVED.Trademarks are owned or controlled by the Canadian Real Estate Association (CREA) and identify real estate professionals who are members of CREA (REALTOR®, REALTORS®) and/or the quality of services they provide (MLS®, Multiple Listing Service®)

Listing information last updated on August 20th, 2025 at 9:18pm MDT