

\$479,900 - 1236 Chahley Landing Landing, Edmonton

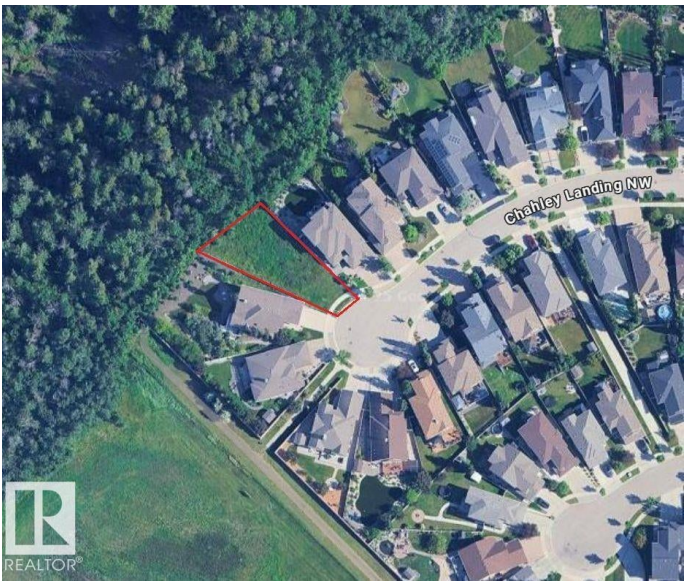
MLS® #E4455278

\$479,900

0 Bedroom, 0.00 Bathroom,
Single Family on 0.00 Acres

Cameron Heights (Edmonton), Edmonton, AB

Visit the Listing Brokerage (and/or listing REALTOR®) website to obtain additional information. Discover the perfect canvas for your dream home in one of Edmonton's most prestigious communities. This 7,675 sq. ft. walkout lot offers unparalleled privacy and breathtaking natural views, backing directly onto a serene ravine. With no rear neighbors, you can enjoy a peaceful setting while being just steps away from scenic walking trails, lush green spaces, and the North Saskatchewan River Valley. Bring your vision to life with the builder of your choice and create a residence that complements this remarkable location. Cameron Heights is renowned for its upscale homes, strong sense of community, and quick access to major routes, shopping, and amenities. Opportunities like this are rare—secure your piece of ravine-front paradise.



Essential Information

MLS® #	E4455278
Price	\$479,900
Bathrooms	0.00
Acres	0.00
Type	Single Family
Sub-Type	Vacant Lot/Land
Status	Active

Community Information

Address	1236 Chahley Landing Landing
Area	Edmonton
Subdivision	Cameron Heights (Edmonton)
City	Edmonton
County	ALBERTA
Province	AB
Postal Code	T6M 0C9

Exterior

Exterior Features Backs Onto Park/Trees, Cul-De-Sac, Golf Nearby, No Back Lane, Playground Nearby, Ravine View, Schools, Shopping Nearby

Additional Information

Date Listed	August 28th, 2025
Days on Market	2
Zoning	Zone 20
HOA Fees	240
HOA Fees Freq.	Annually

DATA IS DEEMED RELIABLE BUT IS NOT GUARANTEED ACCURATE BY THE REALTORS® ASSOCIATION OF EDMONTON. COPYRIGHT 2025 BY THE REALTORS® ASSOCIATION OF EDMONTON. ALL RIGHTS RESERVED.Trademarks are owned or controlled by the Canadian Real Estate Association (CREA) and identify real estate professionals who are members of CREA (REALTOR®, REALTORS®) and/or the quality of services they provide (MLS®, Multiple Listing Service®)

Listing information last updated on August 30th, 2025 at 1:47pm MDT