

Courtesy Of Chloe A Pleckaitis Of RE/MAX River City

## \$564,900 - 9016 88 Street, Edmonton

MLS® #E4455543

**\$564,900**

3 Bedroom, 2.00 Bathroom, 1,033 sqft  
Single Family on 0.00 Acres

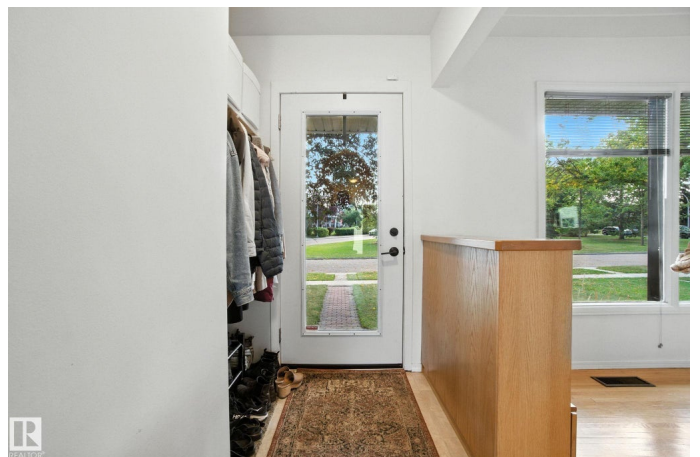
Bonnie Doon, Edmonton, AB

BEAUTIFUL, BRIGHT & PARK FACING 1,033 sqft Bungalow in the HIGHLY desired & FAMILY FRIENDLY Bonnie Doon. Upstairs, this home features 2 bedrooms & fully renovated (2021) full 4pc bath. Primary bedroom has new flooring (2025). The spacious kitchen is perfect for cooking and entertaining, while the bright living room, with large windows, floods with natural light. Sliding patio doors in the dining room open to a back patio, ideal for outdoor enjoyment. The renovated basement (2024) offers a spacious recreation room, laundry/storage space & bedroom with a 3pc ensuite! Outside, enjoy an oversized double garage and huge sunny backyard with plenty of space for activities! Recent upgrades include FURNACE/CENTRAL AIR CONDITIONING (2022), HWT (2021) & roof (2014). You will love this central Bonnie Doon location- excellent access to downtown! Walking distance to Faculte St Jean, The Columbian, and Cafe Bicyclette! Don't miss out on this prime opportunity!

Built in 1954

### Essential Information

MLS® #	E4455543
Price	\$564,900



Bedrooms	3
Bathrooms	2.00
Full Baths	2
Square Footage	1,033
Acres	0.00
Year Built	1954
Type	Single Family
Sub-Type	Detached Single Family
Style	Bungalow
Status	Active

### **Community Information**

Address	9016 88 Street
Area	Edmonton
Subdivision	Bonnie Doon
City	Edmonton
County	ALBERTA
Province	AB
Postal Code	T6C 3J6

### **Amenities**

Amenities	Air Conditioner
Parking	Double Garage Detached, Over Sized

### **Interior**

Interior Features	ensuite bathroom
Appliances	Air Conditioning-Central, Dishwasher-Built-In, Dryer, Garage Control, Garage Opener, Refrigerator, Stove-Electric, Washer, Window Coverings
Heating	Forced Air-1, Natural Gas
Stories	2
Has Basement	Yes
Basement	Full, Finished

### **Exterior**

Exterior	Wood
Exterior Features	Fenced, Landscaped, Park/Reserve, Playground Nearby, Schools, Shopping Nearby, Ski Hill Nearby
Roof	Asphalt Shingles

Construction	Wood
Foundation	Concrete Perimeter

**School Information**

Elementary	RUTHERFORD SCHOOL
Middle	KENILWORTH SCHOOL
High	MCNALLY SCHOOL

**Additional Information**

Date Listed	September 1st, 2025
Days on Market	1
Zoning	Zone 18

DATA IS DEEMED RELIABLE BUT IS NOT GUARANTEED ACCURATE BY THE REALTORS® ASSOCIATION OF EDMONTON. COPYRIGHT 2025 BY THE REALTORS® ASSOCIATION OF EDMONTON. ALL RIGHTS RESERVED.Trademarks are owned or controlled by the Canadian Real Estate Association (CREA) and identify real estate professionals who are members of CREA (REALTOR®, REALTORS®) and/or the quality of services they provide (MLS®, Multiple Listing Service®)

Listing information last updated on September 2nd, 2025 at 7:02pm MDT