

\$199,900 - N/A, Rural Lamont County

MLS® #E4460174

\$199,900

0 Bedroom, 0.00 Bathroom,
Rural on 10.38 Acres

None, Rural Lamont County, AB

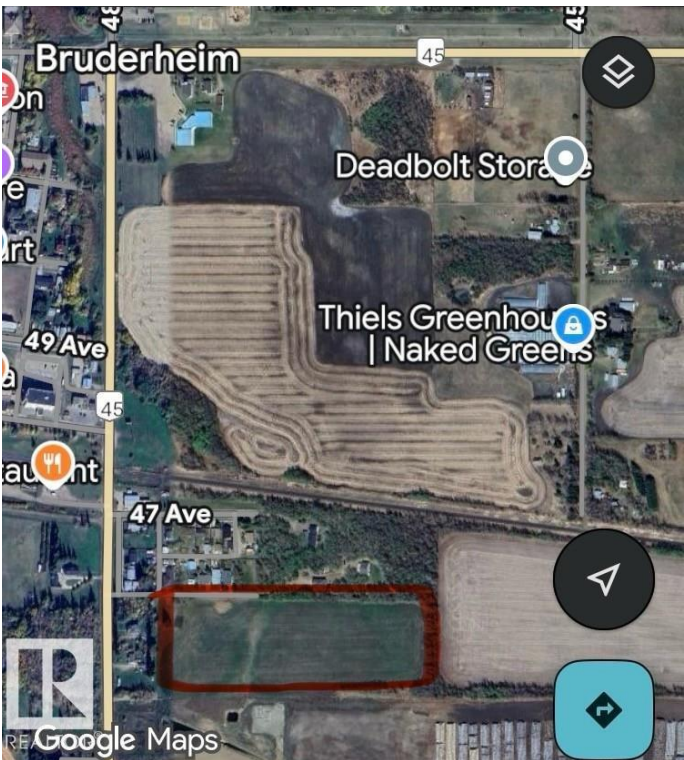
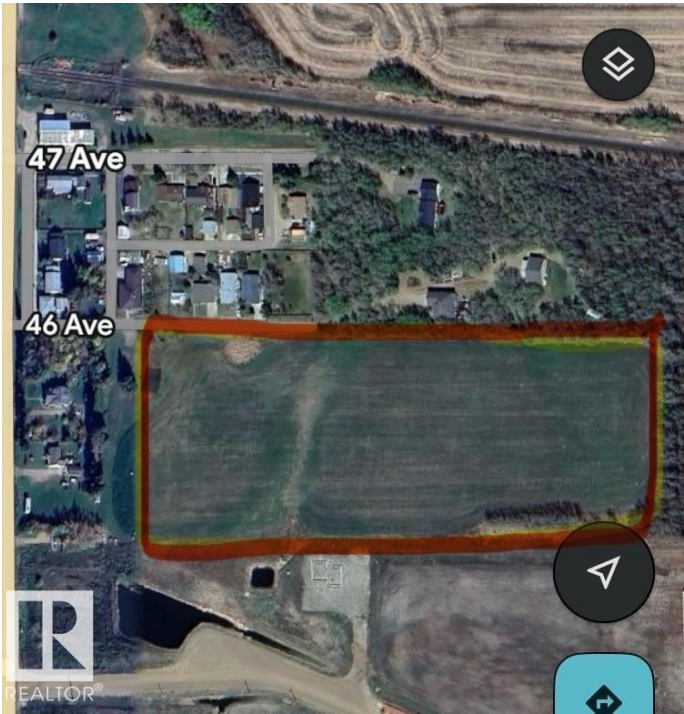
Discover the perfect opportunity to own approximately 10 acres of land located literally next door to Bruderheim. With convenient gravel road access (46 avenue), this property offers a mix of open space and treed areas, providing natural beauty and versatility. Please note: no services are currently on the property (water, electricity, and power are not connected), giving you a blank canvas to create your vision—whether it’s recreational use, future development, or a private retreat. If you’re seeking privacy and space in a town setting, this land is worth a look!

Essential Information

MLS® #	E4460174
Price	\$199,900
Bathrooms	0.00
Acres	10.38
Type	Rural
Sub-Type	Vacant Lot/Land
Status	Active

Community Information

Address	N/A
Area	Rural Lamont County
Subdivision	None



City	Rural Lamont County
County	ALBERTA
Province	AB
Postal Code	T8L 2T2

Exterior

Exterior Features Treed Lot

Additional Information

Date Listed October 1st, 2025

Days on Market 1

Zoning Zone 62

DATA IS DEEMED RELIABLE BUT IS NOT GUARANTEED ACCURATE BY THE REALTORS® ASSOCIATION OF EDMONTON. COPYRIGHT 2025 BY THE REALTORS® ASSOCIATION OF EDMONTON. ALL RIGHTS RESERVED.Trademarks are owned or controlled by the Canadian Real Estate Association (CREA) and identify real estate professionals who are members of CREA (REALTOR®, REALTORS®) and/or the quality of services they provide (MLS®, Multiple Listing Service®)

Listing information last updated on October 2nd, 2025 at 5:17pm MDT