

\$1,150,000 - 194 52328 Hwy 21, Rural Strathcona County

MLS® #E4460769

\$1,150,000

5 Bedroom, 3.50 Bathroom, 2,672 sqft

Rural on 3.06 Acres

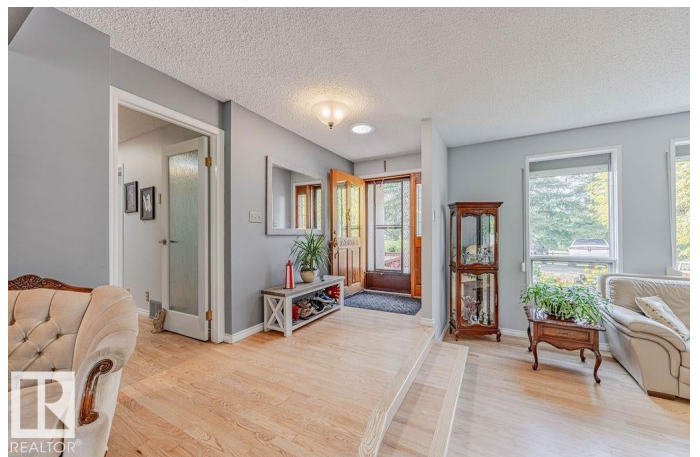
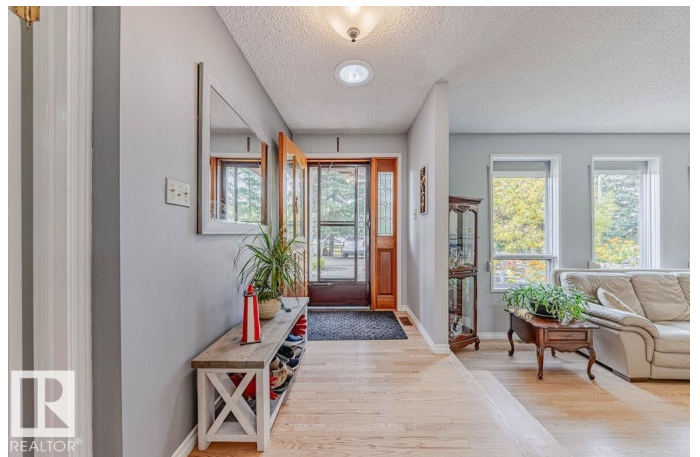
Country Club Estates (Strathcona), Rural Strathcona County, AB

Beauty and tranquility abound in this lovely acreage situated virtually in sherwood park. Enjoy country living with every amenity only a heartbeat away. Plus convenient access to Whitemud, HWY 21, Anthony Henday and Yellowhead all just minutes away. Enjoy a unique and versatile home that accommodates multiple family needs with in-law and/or guest suite possibilities. This open concept bungalow features hardwood floors, wood burning stoves, sunroom, finished basement and more. Upgrades over the years: 900SF addition and new furnaces 2012, HWT 2018, Shingles 2025, new field 2021 and up to date treatment plant, city water installation 2015 plus original well still functional. Mature fruit trees, flower beds and garden space; this acreage has it all!

Built in 1979

Essential Information

MLS® #	E4460769
Price	\$1,150,000
Bedrooms	5
Bathrooms	3.50
Full Baths	3
Half Baths	1



Square Footage	2,672
Acres	3.06
Year Built	1979
Type	Rural
Sub-Type	Detached Single Family
Style	Bungalow
Status	Active

Community Information

Address	194 52328 Hwy 21
Area	Rural Strathcona County
Subdivision	Country Club Estates (Strathcona)
City	Rural Strathcona County
County	ALBERTA
Province	AB
Postal Code	T8B 1J9

Amenities

Features	Deck, Dog Run-Fenced In, Front Porch, Greenhouse, Guest Suite, Hot Tub, No Smoking Home, Parking-Extra, R.V. Storage, Skylight
----------	--

Interior

Interior Features	ensuite bathroom
Heating	Forced Air-2, Natural Gas
Stories	2
Has Suite	Yes
Has Basement	Yes
Basement	Full, Finished

Exterior

Exterior	Wood
Exterior Features	Corner Lot, Cross Fenced, Fenced, Flat Site, Fruit Trees/Shrubs, Landscaped, Level Land, Treed Lot, Vegetable Garden, Partially Fenced
Construction	Wood
Foundation	Concrete Perimeter

Additional Information

Date Listed	October 3rd, 2025
Days on Market	6

Zoning

Zone 80

DATA IS DEEMED RELIABLE BUT IS NOT GUARANTEED ACCURATE BY THE REALTORS® ASSOCIATION OF EDMONTON. COPYRIGHT 2025 BY THE REALTORS® ASSOCIATION OF EDMONTON. ALL RIGHTS RESERVED. Trademarks are owned or controlled by the Canadian Real Estate Association (CREA) and identify real estate professionals who are members of CREA (REALTOR®, REALTORS®) and/or the quality of services they provide (MLS®, Multiple Listing Service®)

Listing information last updated on October 9th, 2025 at 3:32am MDT