

\$1,575,000 - Rr14 & 15 Between Hwy 616 & Hwy 616x, Rural Leduc County

MLS® #E4461047

\$1,575,000

0 Bedroom, 0.00 Bathroom,
Rural on 236.88 Acres

None, Rural Leduc County, AB

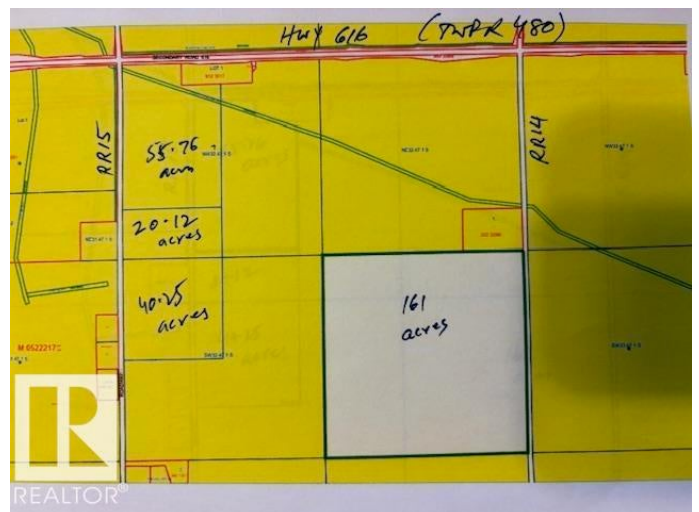
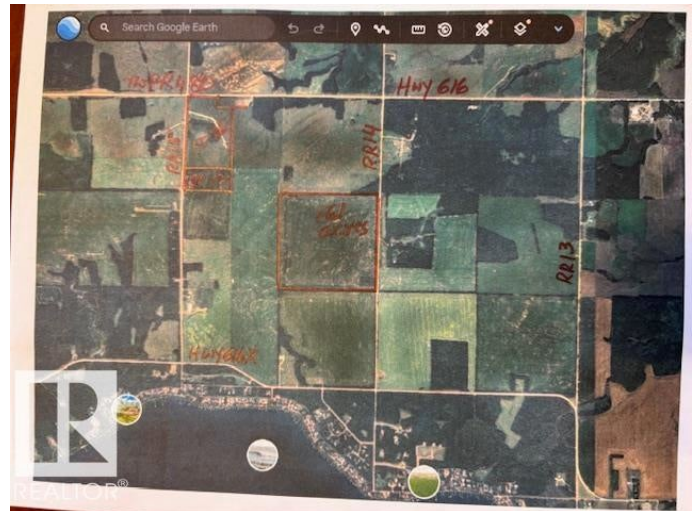
Amazing opportunity to own 236.88 acres â€“
Three parcels of 161 acres, 55.76 acres and
20.12 acres each. - 161 acres are located on
RR14 between HWY616 and HWY 616X. Half
a mile north of PIGEONS LAKE. It is a CROP
LAND. - 55.76 acres are located on SE
Corner of RR15 & HWY 616 (TWPR 480).
These are ROLLING LANDS. Good for HAY
and PASTURE. - 20.12 acres are located
adjoining to 55.76 acres (South of 55.76 acres
on RR15) on RR15 between HWY 616 & HWY
616X by PIGEONS LAKE. These are CROP
LANDS.

Essential Information

| | |
|-----------|-----------------|
| MLS® # | E4461047 |
| Price | \$1,575,000 |
| Bathrooms | 0.00 |
| Acres | 236.88 |
| Type | Rural |
| Sub-Type | Vacant Lot/Land |
| Status | Active |

Community Information

| | |
|-------------|---------------------------|
| Address | Rr14 & 15 Between Hwy 616 |
| Area | Rural Leduc County |
| Subdivision | None |



| | |
|-------------|--------------------|
| City | Rural Leduc County |
| County | ALBERTA |
| Province | AB |
| Postal Code | T9E 2P0 |

Additional Information

| | |
|----------------|-------------------|
| Date Listed | October 6th, 2025 |
| Days on Market | 3 |
| Zoning | Zone 90 |

DATA IS DEEMED RELIABLE BUT IS NOT GUARANTEED ACCURATE BY THE REALTORS® ASSOCIATION OF EDMONTON. COPYRIGHT 2025 BY THE REALTORS® ASSOCIATION OF EDMONTON. ALL RIGHTS RESERVED. Trademarks are owned or controlled by the Canadian Real Estate Association (CREA) and identify real estate professionals who are members of CREA (REALTOR®, REALTORS®) and/or the quality of services they provide (MLS®, Multiple Listing Service®)

Listing information last updated on October 9th, 2025 at 3:32am MDT