

\$120,000 - 3 10836 116 Street, Edmonton

MLS® #E4462115

\$120,000

1 Bedroom, 1.00 Bathroom, 773 sqft
Condo / Townhouse on 0.00 Acres

Queen Mary Park, Edmonton, AB

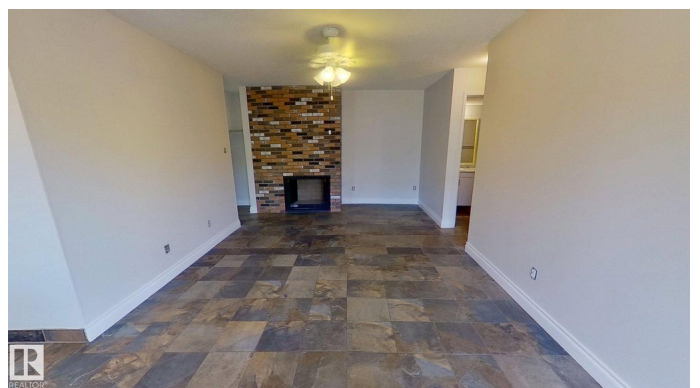
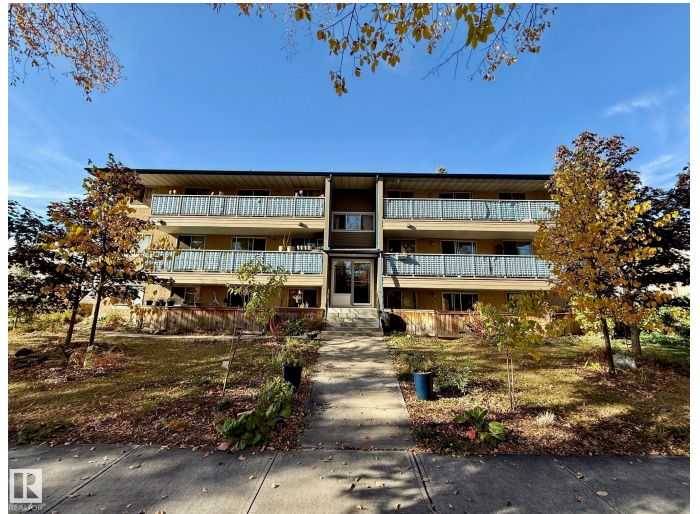
A charming one bedroom, one bathroom ground level suite, located in queen mary park. Features include a brick fireplace, storage shelving at front entrance and insuite washer and dryer. Bedroom and living room have ceiling fans. Patio entrance with sliding lockable door. One parking spot just outside the patio. Located just outside of the downtown core. Close to The brewery district and Oliver square with plenty of amenities. Unit was just professionally painted including ceiling.

Built in 1978

Essential Information

MLS® #	E4462115
Price	\$120,000
Bedrooms	1
Bathrooms	1.00
Full Baths	1
Square Footage	773
Acres	0.00
Year Built	1978
Type	Condo / Townhouse
Sub-Type	Lowrise Apartment
Style	Single Level Apartment
Status	Active

Community Information



Address	3 10836 116 Street
Area	Edmonton
Subdivision	Queen Mary Park
City	Edmonton
County	ALBERTA
Province	AB
Postal Code	T5H 3N5

Amenities

Amenities	Carbon Monoxide Detectors, Detectors Smoke, Parking-Plug-Ins, Parking-Visitor, Patio, Security Door
Parking	Stall

Interior

Appliances	Dishwasher-Built-In, Dryer, Hood Fan, Intercom, Refrigerator, Stove-Electric, Washer, Window Coverings
Heating	Baseboard, Natural Gas
Fireplace	Yes
Fireplaces	Brick Facing, Insert
# of Stories	3
Stories	1
Has Basement	Yes
Basement	None, No Basement

Exterior

Exterior	Concrete, Brick
Exterior Features	Back Lane, Playground Nearby, Shopping Nearby
Roof	Flat
Construction	Concrete, Brick
Foundation	Concrete Perimeter

Additional Information

Date Listed	October 15th, 2025
Days on Market	11
Zoning	Zone 08
Condo Fee	\$580

DATA IS DEEMED RELIABLE BUT IS NOT GUARANTEED ACCURATE BY THE REALTORS® ASSOCIATION OF EDMONTON. COPYRIGHT 2025 BY THE REALTORS® ASSOCIATION OF EDMONTON. ALL RIGHTS RESERVED. Trademarks are owned or controlled by the Canadian Real Estate Association (CREA) and identify real estate professionals who are members of CREA (REALTOR®, REALTORS®) and/or the quality of services they

provide (MLS® , Multiple Listing Service®)

Listing information last updated on October 26th, 2025 at 12:47am MDT